

ANIMAL BEHAVIOR INSTITUTE

ACADEMIC CATALOG 2025-2026



A more personal education



**ANIMAL
BEHAVIOR
INSTITUTE**

A more personal education



MISSION STATEMENT

The Animal Behavior Institute prepares students for careers in animal behavior by providing outstanding educational programs. We create a dynamic, collaborative learning environment where students work closely with both the faculty and each other. Our specialized, interdisciplinary curriculum offers each student a personalized education, tailored to individual student needs. Each program emphasizes practical applications and problem solving. Our educational approach promotes a greater understanding of animals' physical and behavioral needs, strengthening the human-animal bond and promoting the highest levels of animal care and welfare.

Educational Philosophy

Our educational philosophy is a response to the growing need to combine information across disciplines. We address all aspects of learning: intellectual, experiential and applied. Consequently, our students develop the knowledge and skill sets needed for success in a very competitive work environment. Through coursework, assignments and field experience, they will learn to find and evaluate relevant information, communicate effectively, collaborate with others and become active problem solvers.

Location and Contact Information

Our administration offices are located in Durham, NC. Our address and contact information are listed to the right. However, our faculty work from locations across the United States. All classes are held online, fostering student participation from around the world.



Animal Behavior Institute, Inc.

4711 Hope Valley Road,
Suite 4F-332
Durham, NC 27707

866.755.0448

Fax: 866.351.6911

support@animaledu.com

www.animaledu.com

Statement of Disclaimer

The statements in this catalog are for purposes of information. The Animal Behavior Institute, Inc. reserves the right to change any provisions or requirements, including tuition and fees, at any time within the student's term at the institute. Students must fulfill all prevailing program requirements. For updates to the catalog, please refer to the Animal Behavior Institute website at www.animaledu.com.

The Animal Behavior Institute does not discriminate in its educational programs, activities or employment practices based on race, color, national origin, sex, sexual orientation, disability, age, religion, ancestry, union membership or any other legally protected classification. Announcement of this policy is in accordance with state and federal law, including Titles VI and VII of the Civil Rights Act of 1964, Title IX of the Education Amendments of 1972 of the United Sections 503 and 504 of the Rehabilitation Act of 1973, the Age Discrimination Act of 1975, and the Americans with Disabilities Act of 1990.

The Animal Behavior Institute is licensed by the North Carolina State Board of Community Colleges having met the requirements of Article 8 of Chapter 115D of the General Statutes of North Carolina. Please note that the NC State Board of Community Colleges is not an accrediting agency.

© Animal Behavior Institute 2025
September 2025, Volume 21

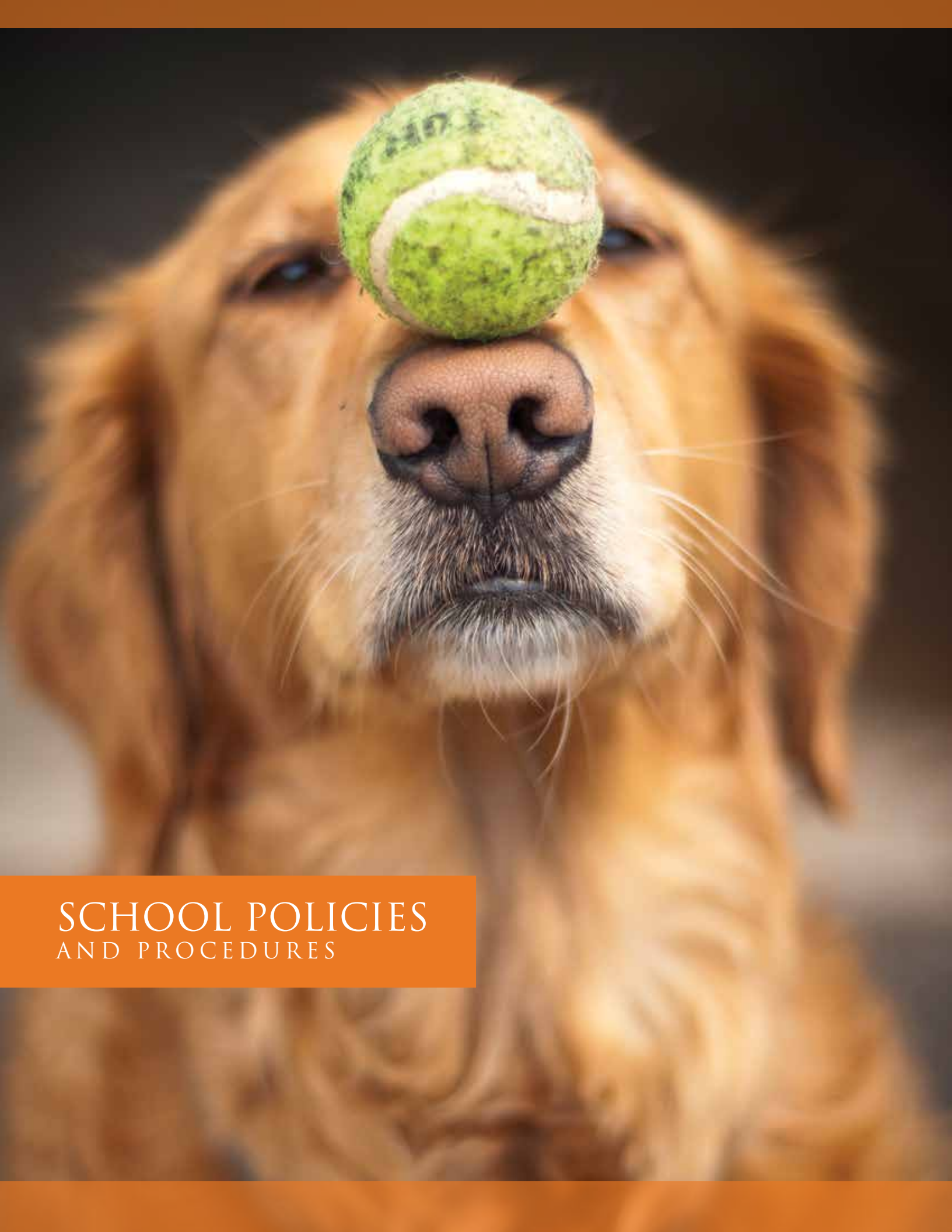


TABLE OF CONTENTS

School Policies & Procedures	6-15
Admission, Tuition & Fees	6-7
Admission Requirements.....	7
Applying for Admission.....	7
Registration.....	7
Tuition & Fees.....	7
Textbooks.....	7
Grading & Student Status	8-9
Grading System.....	8
Standards for Satisfactory Progress.....	8
Academic Probation, Suspension & Termination.....	8
Student Conduct & Conditions for Dismissal.....	8
Attendance Requirements & Leaves of Absence.....	8
Graduation Requirements.....	9
Continuing Education.....	9
Continuing Education Credits	10-11
Student Records	11
School Calendar	13
Financing	14-15
Student Financing.....	14
Fees.....	14
Discounts.....	14
Employer Payment/Reimbursement.....	14
Refund Policy	14
Student Grievance Procedures	15
Support Services	16-17
Academic Support.....	17
Online/Technical Support.....	17
Career Services.....	17

Programs & Courses	18-50
General Requirements	18-19
Overview	19
Certificate Programs.....	19
Specialized Certificates.....	19
Employment Projections	19
Certificate Requirements.....	19
Multiple Certificates.....	19
Certificate Requirements & Descriptions	20-41
Advanced Canine Training	20
Advanced Equine Behavior	22
Advanced Feline Training	24
Animal Assisted Therapy	26
Animal Shelter Management.....	28
Animal Training & Enrichment.....	30
Canine Sports Training.....	32
Exotic Animal Training.....	34
Laboratory Animal Behavior.....	36
Service & Therapy Dog Training	38
Wildlife Rehabilitation.....	40
Zookeeping.....	42
Specialized Certificates	44-48
Canine Training & Behavior	44
Equine Behavior & Management.....	46
Feline Training & Behavior	48
Course Descriptions & Objectives	50-63
Faculty & Staff	64-73
Faculty	64-72
President	65
Administration	72
Advisory Board	72
Terms & Conditions	74
Privacy Policy	76-79





SCHOOL POLICIES
AND PROCEDURES

ADMISSION, TUITION AND FEES

Admission Requirements

The Animal Behavior Institute (ABI) does not discriminate in its educational policies with respect to race, color, national origin, sex, sexual orientation, disability, age, religion, ancestry, union membership, or any other legally protected classification.

Students must be at least 18 years of age and have a high school diploma or the equivalent.

Applying for Admission

The requirements for admission to ABI are:

1. Submission of evidence that the applicant has completed high school. Evidence can consist of any of the following:
 - a. Transcript showing graduation from a public, private, or state registered home high school.
 - b. A certificate of high school equivalency, such as a General Equivalency Diploma (GED).
 - c. Transcript showing graduation from a community college or university.
 - d. Student's signed, notarized attestation of high school graduation or its equivalency, accompanied by a statement that the Student cannot obtain evidence of graduation.
2. Submission of the completed student application.
3. Submission of a completed Student Enrollment Agreement.
4. \$50 application fee payable online via credit or debit card (USD). The

application fee can only be refunded if the student withdraws prior to the first day of class.

5. Reliable access to the internet.

Registration

ABI programs are open to all qualified students wishing to pursue an education in the applied animal sciences.

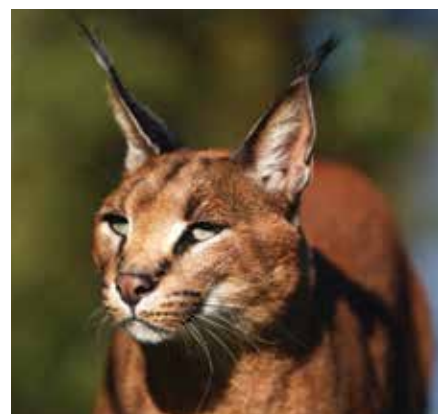
Prospective students must be accepted for admission prior to enrolling in any course at ABI. Once you have been accepted, you may register online via your student account. Please note that registrations completed after the close of regular registration will be charged a \$50 non-refundable late registration fee.

Tuition & Fees

Tuition is \$1,320 (USD) per course. The total tuition for a certificate program, which includes five courses, is \$6,600. Similarly, the total tuition for a specialized certificate, which includes three courses, is \$3,960. Students may elect to take one or more courses individually, without completing a certificate program.

International students are welcome; foreign currency will be valued at the current exchange rate. Discounts are available for military personnel. Qualified military spouses may be eligible for external scholarships covering most or all of their tuition. Additional details are available online at www.animaledu.com.

Textbooks are not included in tuition; the average cost for textbooks ranges from \$50 - \$100 per course.



ABI is open to all students with a high school diploma (or equivalent) wishing to pursue an education in applied animal science.

Textbooks

ABI does not sell textbooks. We provide contact information for online book vendors but students may purchase books wherever they choose, locally or online. Tuition refunds do not include the cost of textbooks purchased elsewhere.

GRADING AND STUDENT STATUS



Grading System

Grading Scale
A = 90-100%
B = 80-89%
C = 70-79%
D = 60-69%
F = less than 60%

Standards For Satisfactory Progress

Students must achieve a 70% or better overall to pass the course and receive credit towards a certificate. Each quiz must be passed with a minimum score of 80%; however, quizzes may be repeated until this score is achieved. Participation in the weekly discussion is also required and is an essential part of every course. Weekly deadlines for participation in each discussion are determined by the course instructor; within these deadlines the participation may take place at the convenience of the student. Students interact dynamically with their professor and each other during these weekly sessions. Work must be completed within the week assigned; there is no make-up work for missed assignments.

Academic Probation, Suspension & Termination

The Animal Behavior Institute provides academic assistance to students through embedded course mechanisms and direct student-faculty interaction. Students that are contemplating withdrawal from a course, or that may fail to satisfactorily complete all requirements, are encouraged to seek additional help from their instructor or their academic advisor. Students may retake courses as necessary to receive a passing grade; we do not put students on academic probation or suspension, nor do we terminate students unless they are dismissed due to inappropriate conduct.

Student Conduct and Conditions For Dismissal

ABI promotes active and open discussion among our students and faculty. We simply require that it's done in a civil and lawful manner - whether it's posting on our discussion boards, participating in the Student Café or using our system to e-mail someone directly. Accordingly, you agree to use ABI for lawful purposes only. You may not use or allow others to use your ABI membership to:

- Post or transmit any content that is abusive, vulgar, obscene, hateful, fraudulent, threatening, harassing, defamatory, or which discloses private or personal matters concerning any person;
- Post or transmit any material that you don't have the right to transmit under law (such as copyrighted material, trade secrets or securities) or under contractual or fiduciary relationships (such as nondisclo-

sure agreements);

- Post, transmit, or link to sexually explicit material;
- Impersonate any person, or falsely state or otherwise misrepresent your affiliation with a person or entity;
- Post or transmit any advertising, promotional materials, or other forms of solicitation including chain letters and pyramid schemes;
- Intentionally violate any other applicable law or regulation while accessing and using our site;
- Intentionally post or transmit any file that contains viruses, corrupted files, "Trojan Horses," or any other contaminating or destructive features that may damage someone else's computer.

You agree to indemnify ABI and hold us harmless from any actions, claims, proceedings, or liabilities arising out of your violation of these terms and conditions. You are responsible for all statements made and acts that occur through the use of your user name and password; please don't disclose your password to anyone. If it has been lost or stolen, let us know immediately.

Violating the above provisions is cause for immediate dismissal from the school without a refund.

Academic Integrity

The grades and credits awarded to you must be based exclusively on your work. You may not submit contributions from other individuals and present them as your own. This extends to all forms of participation and assessment, including quizzes, exams, discussions, projects and other assignments. You cannot copy

work from another student or other outside sources; please see the policy on Academic Plagiarism for more information.

Academic dishonesty or cheating is subject to the following penalties:

1. **First offense:** the instructor will point out the nature of the problem, explain why it constitutes an act of academic dishonesty, and provide you with an opportunity to correct your mistake.
2. **Second offense:** dishonesty will result in a score of zero for the assignment.
3. **Third offense:** dishonesty will result in a score of zero for the assignment.
4. Any subsequent act of academic dishonesty will result in a failing grade and removal from the course without a refund.

Attendance Requirements and Leaves of Absence

Students are required to participate in the course every week, including the timely submission of discussion posts, exams and other projects as assigned. A leave of absence, or excused absences from assignments, may be granted based on extenuating circumstances. These may be arranged in advance with your instructor or academic advisor.

Graduation Requirements

Students must receive a minimum grade of C (70%) in each course in order to use the course towards their graduation requirements.

Students interact directly with the faculty each week via case studies and class discussion.



Certificate Programs

Graduation from our traditional twelve certificate programs requires the completion of five courses (15 credits) and a field requirement consisting of 40 hours of employment or volunteer work at a relevant institution approved by the student's academic advisor.

Specialized Programs

We offer four specialized certificates that require the successful completion of three courses (9 credits) and a field requirement

consisting of 40 hours of employment or volunteer work at a relevant institution approved by the student's academic advisor.

Continuing Education

Students may elect to enroll in individual courses to fulfill their professional continuing education requirements. If a student chooses to register for individual courses, without intending to complete a program and graduate with a certificate, they do not need to complete the Field Requirement.

CONTINUING

EDUCATION CREDITS - ALL ABI COURSES ARE 3 CREDITS



The Animal Behavior Institute is accredited as an authorized provider for the International Accreditors for Continuing Education and Training.

ABI provides classes for professional development and continuing education credits. ABI is not an undergraduate or graduate degree granting institution. However, our classes can be used to meet the continuing education requirements of many professional associations.

learningpartner

ASSOCIATION
OF ZOOS &
AQUARIUMS

Association of Zoos & Aquariums - Learning Provider

The Animal Behavior Institute is proud to be a Learning Partner with the Association of Zoos & Aquariums (AZA). Our two organizations share a common mission to provide professional, high quality training.

Our status as an official AZA Learning Partner will allow students to use a

number of ABI courses as electives in AZA Professional Development Certificate Programs.

Certification Council for Professional Dog Trainers - Approved Provider

The Certification Council for Professional Dog Trainers (CCPDT) has also pre-approved the Animal Behavior Institute for CCPDT Continuing Education Units (CEUs). The CCPDT is an international testing and certification program for professional dog trainers.

Distance Education Accrediting Council

The Distance Education Accrediting Council has recognized the Animal Behavior Institute as Approved Provider after completing the Approved Quality Curriculum review process. AQC approval has been granted to all courses in the Canine Training & Behavior certificate program. Please note that this approval is not accreditation.



International Accreditors for Continuing Education And Training - Authorized Provider

The Animal Behavior Institute is accredited by the International Accreditors for Continuing Education and Training (IACET). The Animal Behavior Institute complies with the ANSI/IACET Standard, which is recognized internationally as a standard of excellence in instruc-

tional practices. As a result of this accreditation, The Animal Behavior Institute is authorized to issue the IACET CEU.

IACET criteria are the core of thousands of educational programs worldwide. Acceptance as an authorized provider recognizes that an institution:

1. Demonstrates compliance with proven, research-based standards.
2. Is dedicated to high standards for quality in continuing education and training.
3. Awards the IACET CEU, the hallmark for quality in continuing education and training.

For more information on the IACET CEU contact:

International Accreditors for Continuing Education & Training

45591 Dulles Eastern Plaza
Suite 132, Box 805
Sterling, VA 20166
Phone: (703) 763-0705
Website: www.iacet.org



International Wildlife Rehabilitation Council

The Certification Review Board of the International Wildlife Rehabilitation Council has approved the Wildlife Rehabilitation courses at the Animal Behavior Institute for use as continuing education credits for nationally certified wildlife

rehabilitators.

In addition, ABI classes are preapproved for continuing education credit with numerous other professional associations and state agencies. Check with your own professional association if you will be using our courses for licensing or continuing education credit.

Student Records

Student records are permanently retained on location; unofficial transcripts may be viewed online with your student account. An official transcript may be obtained at no cost, via written request.

After the successful completion of each course, students will receive a course completion certificate, provided that they are current in any payment plan.

After graduating, students will receive their final program certificates via UPS, provided their account is paid in full. Duplicate copies of the certificate are available at no charge.



CALENDAR

A photograph showing a person's legs in green rubber boots and white socks, with one hand in a white glove holding a small, fluffy penguin chick by its beak. Several other penguins, including an adult with a white stripe on its face and another with a red collar, are gathered around on a sandy ground. The background shows a wooden fence and some rocks.

ABI is open to all students with a high school diploma (or equivalent) wishing to pursue an education in applied animal science.

Fall 2025 Semester	
September 10	Regular Registration Ends
September 11 - 17	Late Registration Period*
September 18	First Day of Class
September 24	Last Day to Withdraw with a Full Refund
November 12	Last Day to Withdraw from Class
November 26	Last Day of Class
Nov. 27 - Dec. 3	Thanksgiving Break
December 4 - 10	Final Exams
December 10	Fall Semester Ends

Winter 2026 Semester	
December 31	Regular Registration Ends
January 1 - 7	Late Registration Period*
January 8	First Day of Class
January 14	Last Day to Withdraw with a Full Refund
March 4	Last Day to Withdraw from Class
March 18	Last Day of Class
March 19 - 25	Final Exams
March 25	Winter Semester Ends

Spring 2026 Semester	
March 25	Regular Registration Ends
March 26 - April 1	Late Registration Period*
April 2	First Day of Class
April 8	Last Day to Withdraw with a Full Refund
May 27	Last Day to Withdraw from Class
June 10	Last Day of Class
June 11 - 17	Final Exams
June 17	Spring Semester Ends

Summer 2026 Semester	
June 17	Regular Registration Ends
June 18 - 24	Late Registration Period*
June 25	First Day of Class
July 1	Last Day to Withdraw with a Full Refund
August 19	Last Day to Withdraw from Class
September 2	Last Day of Class
September 3 - 9	Final Exams
September 9	Summer Semester Ends



As an online educator, the Animal Behavior Institute does not require attendance at any physical location. Students may complete their assignments at any time during the week and may elect not to participate on any specific day. Neither students, faculty or staff are required to be online or in attendance if they are observing a religious or secular holiday.

Classes are taught on a quarterly basis and run for ten weeks, followed by a comprehensive final exam. Start dates for this year's academic semesters are as follows.

Fall Semester - 2025

Start Date: 9/18/2025
Last Day to Register: 9/17/2025

Winter Semester - 2026

Start Date: 1/8/2025
Last Day to Register: 1/7/2025

Spring Semester - 2026

Start Date: 4/2/2025
Last Day to Register: 4/1/2025

Summer Semester - 2026

Start Date: 6/25/2025
Last Day to Register: 6/24/2025

*Registrations completed after the close of regular registration will be charged a \$50 non-refundable late registration fee.

FINANCING,

REFUNDS, AND STUDENT GRIEVANCES

Student Financing

To facilitate budgeting and financial planning, we offer a number of payment plans for qualified students. Our convenient payment plans offer the following:

- Small down payments, as low as \$300 per course.
- Interest-free terms.
- Financing over as many as 12 months. For example, one course financed over 12 months requires a monthly payment of only \$89.
- Quick and easy application process; there is a non-refundable application fee for processing.
- Easy refinancing for each semester; you can finance a single course or your entire program.

International students are welcome; foreign currency will be valued at the current exchange rate at the time of payment. Additional payment plans are available. If you have further questions, please contact us at financing@animaledu.com or call 866.755.0448.

Fees

If a student elects a payment plan, a one-time \$50 processing fee will be added to the financed amount. There is no charge for refinancing an existing payment plan.

Discounts

ABI provides discounts for veterans and active military personnel. Please contact the Financing Office for additional information.

Employer Payment/Reimbursement

A number of professions (veterinarian, vet technician, nurse, educator, therapist) require annual continuing education credits for practitioners to stay current and maintain their license. Many of the courses at ABI qualify for professional continuing education credit. Furthermore, the knowledge and skills you gain through ABI may enable you to provide additional services to your clients, such as a new animal assisted activities program, enrichment, or animal training. Consequently, many employers offer tuition payment or reimbursement for their employees.

To find out more:

1. Ask your employer if they have a training program or if they reimburse expenses for career or job skills training. You may need to contact your Human Resources department.
2. Determine what documents are needed to obtain funding up front or reimbursement after the class is completed. ABI will gladly furnish course information or other documentation to assist in this process.
3. If you are using your course work to satisfy continuing education credits, determine whether your certification agency already accepts ABI classes. If not, we can assist you with the necessary documentation to pursue acceptance.

Refund Policy

Students who withdraw before class begins or within seven (7) calendar days of the start of class will receive a full refund of all course tuition. The cost of books purchased outside ABI is not refunded, nor are late fees or financing charges. Students that withdraw after the first full week of class will receive a prorated refund as follows:

Date	Tuition Refund
After week 1 begins; Before week 2 begins	100% of course cost
After week 2 begins; Before week 3 begins	75% of course cost
After week 3 begins; Before week 5 begins	50% of course cost
After week 5 begins; Before week 8 begins	25% of course cost
After week 8 begins	No refund
After week 9 begins	No withdrawal

Students withdrawing after the first week of class will receive a W on their transcript. To withdraw, a student must contact the registrar in writing at registrar@animaledu.com.

Student Grievance Procedures

Any student that has a problem or grievance with the school should contact their professor or the president on any issue that is not course related. If a resolution is not reached with the faculty member, the student should then submit a written complaint to the president requesting a written response. Grievances may be directed to:

President

Animal Behavior Institute, Inc.

4711 Hope Valley Road
Suite 4F-332
Durham, NC 27707

Phone: (866) 755-0448

Fax: (866) 351-6911


If a satisfactory resolution is still not obtained, the student may contact:

North Carolina Community College System

Academic and Student Services
Office of Proprietary School
Licensing and Services
5001 Mail Service Center
Raleigh, NC 27699-5016

Phone: (919) 807-7148

Fax: (919) 807-7164



Students have used their ABI education to start their own businesses in animal training, husbandry, and animal assisted activities.

SUPPORT
SERVICES



ACADEMIC

SUPPORT & CAREER SERVICES

Academic Support

Throughout the semester students have access to their professor via discussion boards, the Student Café, and direct e-mail. Weekly discussions are posted in each module on a topic or problem relevant to the week's content. Students receive feedback from both the professor and their student colleagues and are encouraged to ask follow-up questions or continue the dialog directly with their instructor. Students experiencing academic difficulty may contact their instructor or academic advisor for additional assistance. Students may also contact individual faculty members to discuss topics in more detail, ask questions, or explore a problem or issue arising from their own professional experience.

Online/Technical Support

Our online classroom technology is provided by Moodle, the world's most popular course management system. If you experience difficulties, you can contact us at moodlehelp@animaledu.com or by calling 866-755-0448, Monday to Friday, 9am – 5pm Eastern time.

Career Services

At the end of each course the student will receive a certificate documenting successful completion of the course(s) taken. Once all requirements are met for full certification, the student will receive an official certificate (with the state and institutional seals), and a copy of the student's official transcript.

ABI also provides career assistance, including help with resumes and cover letters. Current students and graduates have access to these resources and assistance as long as they remain in good standing with the institution.



Weekly discussions are posted in each module on a topic or problem relevant to the week's content.

PROGRAMS
& COURSES



GENERAL REQUIREMENTS

Program Overview

Our online programs are unlike any other distance education program. Students at the Animal Behavior Institute participate in a highly interactive online classroom, engaging in regular dialog with their professors and student colleagues. Students receive feedback each week, working on both collaborative and individual projects. This allows them to achieve a deeper level of understanding than they would develop on their own. This collaboration, coupled with the mentoring each student receives from their instructors, ensures that they receive a very personal education.

All programs at the Animal Behavior Institute require the completion of both online classes and a field requirement. The field requirement consists of relevant, hands-on experience as an employee, intern or volunteer at an approved institution of your choice. The number of classes required will depend upon the type of program selected. All certificate and specialized professional certificate programs require 40 hours of field experience. The Animal Behavior Institute offers two sets of programs to best meet your needs: professional certificate programs and specialized certificates.

Professional Certificates

Each of our professional certificate programs require the completion of five courses (15 academic credits) designed to help students develop a thorough understanding of their chosen field. Certificates typically include a combination of required

courses along with a choice of program electives; most students complete their classes in less than a year.

We currently offer twelve certificate programs:

1. Advanced Canine Training
2. Advanced Equine Training
3. Advanced Feline Training
4. Animal Assisted Therapy
5. Animal Shelter Management
6. Animal Training & Enrichment
7. Canine Sports Training
8. Exotic Animal Training
9. Laboratory Animal Behavior
10. Service & Therapy Dog Training
11. Wildlife Rehabilitation
12. Zookeeping

Specialized Certificates

Specialized certificate programs are shorter programs ideal for students that want to focus on the training and behavior of a single species. Each specialized certificate requires the completion of three courses (9 academic credits) covering training, behavior, health, nutrition and enrichment; specialized certificates can be completed in 6-9 months.

We currently offer three specialized certificate programs:

1. Canine Training & Behavior
2. Equine Behavior & Management
3. Feline Training & Behavior

Employment Projections

Please note that all employment projections listed in the catalog are taken from the U.S. Department of

Labor, Bureau of Labor Statistics, Occupational Outlook Handbook, unless otherwise noted.

Certificate Requirements

Students must pay their account in full and complete their field requirement before final certificates can be issued. Once a student has completed all course requirements, they have to finish their field hours and submit the relevant paperwork to receive their certificate.

Multiple Certificates

Students are welcome to pursue multiple certificates as they design the academic program best suited to their unique educational needs. Students must meet the credit and field requirements for each certification program. Each professional certificate requires the completion of five courses (15 credits); specialized certificates require three courses (9 credits). However, there is some course overlap due to the nature of the material. If the same course is required for more than one certificate, students are required to take the course only once.

Canine Training & Behavior and Service & Therapy Dog Training would take ABI 234 Canine Training and ABI 271 Canine Behavior & Enrichment only once; the courses would be applied to both certificates. In this example, students would only need to take five courses total to receive dual certification, since ABI 234 Canine Training, and ABI 271 Canine Behavior & Enrichment could be applied to both certificates.

CERTIFICATE

REQUIREMENTS & DESCRIPTIONS

ADVANCED CANINE TRAINING

Certificate Program
(15 credits)



Many of our graduates start their own businesses after obtaining their certificate, working as independent dog trainers and behavioral consultants.

This certificate offers an innovative, in-depth study of canine training, building upon the fundamental skills learned in the Canine Training & Behavior program. Students will go far beyond simply designing a training plan. You will learn how to incorporate principles of behavioral science to identify training goals, and to develop and evaluate treatment programs for dogs. We will tackle difficult canine behavioral problems in a variety of settings and evaluate change across settings and time. You will also analyze case studies, learn how to manage dog-dog play interactions, and be introduced to a variety of specialized training and canine competition options; students are encouraged to share their personal training challenges with the class.

The program will also incorporate material on working with clients to maintain effective behavior change in their dogs, producing long-lasting results. Your education will allow you to:

- Develop comprehensive training goals in a variety of situations.
- Choose effective and ethical training tools.
- Understand breed differences in training contexts.
- Know the etiology of common problem behaviors.
- Incorporate behavioral science into training and problem solving.
- Objectively measure behavior and behavior change.
- Explain and recognize important considerations for specialized

training and competition (e.g., agility, disc, flyball, rally, schutzhund).

- Accurately read canine body language to effectively manage safe dog-dog play groups.
- Incorporate cognitive challenges, enrichment and choice into your training plan.
- Read and critically discuss case studies on canine problem behaviors.
- And much, much more!

The Advanced Canine Training certificate requires the completion of the three required classes for the specialized certificate program in Canine Training & Behavior plus two additional classes for a total of five online courses (15 academic credits). Students in the canine programs must also complete a field requirement of 40 hours of hands-on experience as an employee, intern or volunteer at an approved institution of your choice.

Please note that students in the Advanced Canine Training program do not need to complete the field requirement more than once; the field hours used for the Canine Training & Behavior specialized certificate can also be used to satisfy the field requirement for the Advanced Canine Training certificate.

The required courses for this certificate are:

- ABI 234** Canine Training*
- ABI 271** Canine Behavior & Enrichment*
- ABI 312** Canine Health & Nutrition
- ABI 334** Advanced Canine Training*

You will also choose one elective from the following:

- ABI 126** Animal Minds & Emotions
- ABI 238** Therapy Dog Training*
- ABI 254** Canine Aggression
- ABI 264** Training The Canine Athlete*
- ABI 274** Canine Scent Work*
- ABI 284** Building Your Dog Training Business

Upon graduation, students may begin using the designation CACTP, Certified Advanced Canine Training Professional. Many of our graduates start their own businesses after obtaining their certificate, working as independent dog trainers and behavioral consultants. Other graduates find work in kennels, animal shelters, veterinary practices, animal control agencies, service dog institutions, sanctuaries or other dog-related organizations. The animal care and service industry, which includes animal trainers, is expected to grow at 15% over the next decade. Opportunities in training have never been greater!

The cost of the certificate program is \$6,600 (this does not include the cost of textbooks, purchased separately). Tuition assistance is available via military discounts and interest-free financing.

* Must have access to a dog.



CERTIFICATE

REQUIREMENTS & DESCRIPTIONS

ADVANCED EQUINE TRAINING

Certificate Program
(15 credits)



Students go far beyond training; you will learn how to incorporate principles of behavioral science to identify training goals and to develop and evaluate training programs.

The Advanced Equine Training program provides an innovative, in-depth study of equine training and behavior, building on the skills learned in the specialized certificate in Equine Behavior & Management. Students

go far beyond training; you will learn how to incorporate principles of behavioral science to identify training goals and to develop and evaluate training programs. We will tackle equine behavioral problems in a variety of settings; students are encouraged to share their personal training challenges as well. Additional coursework in management will help you build a new equine business or take an existing one to the next level.

Your specialized training will allow you to:

- Write a behavioral modification plan incorporating the use of a clicker.
- Maximize the welfare of horses through the development of a low-stress, ongoing training program.
- Prepare horses for professional showing, including items related to transportation, behavior and physical appearance.
- Create a detailed mission statement for your business, establishing your intent and developing specific, measurable goals.
- Build a marketing plan to develop your business.
- Determine the financing needed and how to obtain the necessary funds.

These outcomes are in addition to the goals of the Equine Behavior & Management program listed here. The certificate in Advanced Equine Training requires the completion of the three required classes for the specialized certificate in Equine Behavior & Management plus two additional classes for a total of five

courses (15 academic credits). There is also a field requirement consisting of 40 hours of hands-on experience as an employee, intern or volunteer at an institution of your choice.

The four required courses for the Advanced Equine Training certificate are:

- ABI 127** Equine Minds & Emotions
- ABI 237** Equine Behavior
- ABI 267** Equine Training
- ABI 317** Equine Health & Nutrition

You will also choose one elective for the Advanced Equine Training certificate from the following:

- ABI 222** Animal Enrichment
- ABI 232** The Human-Animal Bond
- ABI 261** Equine Assisted Activities & Therapies

Please note that students in the Advanced Equine Training program do not need to complete the field requirement more than once. The field hours used for the Equine Behavior & Management specialized certificate can also be used to satisfy the field requirement for Advanced Equine Training.

Upon graduation, students may begin using the designation CAETP, Certified Advanced Equine Training Professional. Many of our graduates start their own businesses after obtaining their certificate, working as independent trainers and behavioral consultants. Other graduates find work at riding stables, training facilities, or equestrian centers. The

outlook for professionals in animal care and service, which includes equine trainers, is very positive. Employment in these areas is expected to grow 11% over the next decade, faster than the average for all occupations*. Salaries vary greatly based on the specific field or employer. For example, independent animal trainers may work for \$20-50/hour or more. Animal care staff working in other fields may earn considerably less.

The Animal Behavior Institute is the only institution to offer accredited, online programs in Equine Training & Behavior. Our program is unlike any other distance education program. Students at the Animal Behavior Institute participate in a highly interactive online classroom, engaging in regular dialog with their professors and student colleagues. Students receive feedback each week, working on collaborative projects while training their own animals. This allows them to achieve a deeper level of understanding than they would develop on their own. This collaboration, coupled with the mentoring each student receives from their instructors, ensures that they receive a very personal education.

The cost of the certificate program is \$6,600 (this does not include the cost of textbooks, purchased separately). Tuition assistance is available via military discounts and interest-free financing.



CERTIFICATE

REQUIREMENTS & DESCRIPTIONS

ADVANCED FELINE TRAINING

Certificate Program (15 credits)



Students will develop critical problem-solving skills, working with owners through the process of diagnosis, construction of treatment plans, and a quantitative approach to re-evaluation and training adjustments.

The Advanced Feline Training program will build upon the skills developed in the specialized certificate in Feline Training and Behavior. Emphasis will be on the analysis of real case studies; students are encouraged to bring their personal training challenges to class as well. You will develop critical problem-solving skills, working with owners through the process of diagnosis, construction of treatment plans, and a quantitative approach to re-evaluation and training adjustments. Graduates will be well prepared to help owners implement effective long term solutions. Your training will allow you to:

- Assess behavioral issues in cats and create effective treatment plans.
- Integrate multiple techniques to change feline behaviors, including training, enrichment and environmental management.
- Handle severe cases of ongoing aggression.
- Identify the triggers for problem behaviors.
- Treat multiple behavioral issues that occur simultaneously.
- Understand cognitive dysfunction and how to address it.
- Effectively treat persistent behavioral problems and develop extended treatment plans.
- Work effectively with owners to develop long term compliance.

- Tailor treatment plans to the family structure of the owners.
- And much, much more!

Please note that the Animal Behavior Institute is the only institution of higher learning to offer specialized programs tailored to the needs of cat behaviorists and trainers.

The Advanced Feline Training certificate requires the completion of the three required classes for the specialized certificate program in Feline Training & Behavior plus two additional classes for a total of five online courses (15 academic credits). Students in the feline programs must also complete a field requirement of 40 hours of hands-on experience as an employee, intern or volunteer at an approved institution of your choice.

Please note that students in the Advanced Feline Training program do not need to complete the field requirement more than once; the field hours used for the Feline Training & Behavior specialized certificate can also be used to satisfy the field requirement for the Advanced Feline Training certificate.

The required courses for this certificate are:

ABI 235 Feline Training

ABI 272 Feline Behavior & Enrichment

ABI 313 Feline Health & Nutrition

ABI 335 Advanced Feline Training

You will also choose one elective from the following:

ABI 126 Animal Minds & Emotions

ABI 222 Animal Enrichment

ABI 331 Animal Behavior: An Evolutionary Approach

Upon graduation, students may begin using the designation CAFTP, Certified Advanced Feline Training Professional. Many of our graduates start their own businesses after obtaining their certificate, working as independent cat trainers and behavioral consultants. Other graduates find work in kennels, animal shelters, veterinary practices, animal control agencies, sanctuaries or other cat-related organizations. The animal care and service industry, which includes animal trainers, is expected to grow at 15% over the next decade. Opportunities in training have never been greater!

The cost of the certificate program is \$6,600 (this does not include the cost of textbooks, purchased separately). Tuition assistance is available via military discounts and interest-free financing.



CERTIFICATE

REQUIREMENTS & DESCRIPTIONS

ANIMAL ASSISTED THERAPY

Certificate Program (15 credits)



Therapy and therapy assistant positions are projected to grow much faster than average for the next decade, by over 27%.

Do you want to share your love of animals with others, bringing the unique benefits of human-animal interaction into the lives of those that need it most?

Do you want an education that spans the breadth of animal assisted interventions, education and activities (AAT/E/A)? Our comprehensive program will give you the skills you need to participate in an

existing program or to get started building your own. Our Certificate in Animal Assisted Therapy will help you to:

- Work with animals in an educational or therapeutic setting.
- Correctly interpret human and animal body language.
- Train dogs and other animals to work safely in the AAT environment.
- Build safe & effective programs.
- Anticipate and resolve potential problems.
- Understand the legal and ethical issues.
- Work with a variety of personality types.
- Create animal enrichment programs.
- And much, much more!

The Animal Assisted Therapy certificate requires the completion of five online courses (15 academic credits) and a field requirement consisting of 40 hours of hands-on experience as an employee, intern or volunteer at an approved institution of your choice

The required courses for this certificate are:

- ABI 117** Working with People and Animals
- ABI 211** Animal Assisted Interventions
- ABI 232** The Human-Animal Bond
- ABI 233** Animal Training⁺

Can substitute with ABI 234 Canine Training, ABI 235 Feline Training or ABI 267 Equine Training.

You will also choose one elective from the following:

- ABI 238** Therapy Dog Training^{*}
- ABI 251** Behavior & Training of Marine Mammals
- ABI 261** Equine Assisted Activities & Therapies
- ABI 271** Canine Behavior & Enrichment^{*}
- ABI 272** Feline Behavior & Enrichment
- ABI 331** Animal Behavior: An Evolutionary Approach

Upon graduation, students may begin using the designation CAATP, Certified Animal Assisted Therapy Professional. Many of our graduates start their own programs after completing their certificate, working as independent contractors. Others may incorporate their training into positions as therapists, counselors, teachers, social workers, special education instructors, nurses, program managers and more. The outlook for professionals employing Animal Assisted Therapy is extremely positive. Therapy and therapy assistant positions are projected to grow much faster than average for the next decade, by over 27%. Opportunities in Animal Assisted Therapy & Activities have never been greater!

The cost of the certificate program is \$6,600 (this does not include the cost of textbooks, purchased separately). Tuition assistance is available via military discounts and interest-free financing.

⁺ Must have access to an animal.

^{*} Must have access to a dog.



CERTIFICATE

REQUIREMENTS & DESCRIPTIONS

ANIMAL SHELTER MANAGEMENT

Certificate Program
(15 credits)



You'll learn how to establish effective protocols, develop community and outreach programs, recruit and retain staff & volunteers, and maximize the quality of life for the animals in your care.

Our program in Animal Shelter Management will prepare you to take a leadership role in your current institution, enhance your skills as a manager, or help you launch your own shelter or rescue organization. You'll learn how to establish effective protocols, develop community and outreach programs, recruit and retain staff & volunteers, and maximize the quality of life for the animals in your care. Our Animal Shelter Management program will help you to:

- Manage the intake and adoption processes.
- Oversee the cleanliness, sanitation, and maintenance of the facility.
- Institute best practices to minimize the spread of infectious diseases.
- Recruit and retain animal shelter staff, addressing both animal management and business processes.
- Ensure that proper records are maintained, including spay/neuter status, vaccinations, treatment records, and health observations.
- Develop and implement a proactive enrichment program to prevent or reduce the incidence of problem behaviors.
- Implement strategies to actively recruit and retain a diverse group of volunteers.
- Solicit financial support via donations and community programs.

The Animal Shelter Management certificate requires the completion of four required classes and one

elective class, for a total of five on-line courses (15 academic credits). Students in the program must also complete a field requirement; 40 hours of hands-on experience as an employee, intern or volunteer at an approved institution of your choice.

Please note the field requirement only needs to be completed once to satisfy both the combined Animal Shelter Management and Canine Training & Behavior certificates, as long as the experience includes working with dogs. Similarly, your field experience can be used to satisfy both the combined Animal Shelter Management and Feline Training & Behavior certificates, as long as the experience includes working with cats.

The required courses for this certificate program are:

- ABI 271** Canine Behavior & Enrichment*
- ABI 272** Feline Behavior & Enrichment
- ABI 315** Shelter Animal Health & Nutrition¹
- ABI 384** Animal Shelter Management

You will also choose one elective from the following:

- ABI 117** Working With People & Animals
- ABI 233** Animal Training⁺
- ABI 234** Canine Training^{2*}
- ABI 235** Feline Training²
- ABI 254** Canine Aggression

Upon graduation, students may begin using the designation CASMP, Certified Animal Shelter Management Professional. Some graduates may choose to open a shelter or rescue after obtaining their certificate, while others may work in kennels, animal shelters, veterinary practices, animal control agencies, sanctuaries or other animal-related organizations. Students that take one of the training electives may also work as trainers or behavioral consultants.

The animal care and service industry, which includes animal trainers, is expected to grow at 15% over the next decade. Opportunities in Animal Shelter Management have never been greater!

The cost of the certificate program is \$6,600 (this does not include the cost of textbooks, purchased separately). Tuition assistance is available via military discounts and interest free financing.

* Must have access to a dog.

+ Must have access to an animal.

¹ Either ABI 312 Canine Health & Nutrition or ABI 313 Feline Health & Nutrition may be substituted for ABI 315 Shelter Animal Nutrition.

² Please note that you will receive a second certificate at no additional cost if you select one of the training electives, either ABI 234 Canine Training (additional certificate in Canine Training & Behavior) or ABI 235 Feline Training (additional certificate in Feline Training & Behavior).



CERTIFICATE

REQUIREMENTS & DESCRIPTIONS

ANIMAL TRAINING & ENRICHMENT

Certificate Program
(15 credits)



We will help you develop the skills you need to be effective in animal training, enrichment and behavior.

Do you dream of a career training wildlife or domestic animals? Do you want to develop the skills to work with nearly any species in any setting? If so, our Certificate Program in Animal Training & Enrichment is for you! Our program takes a comprehensive approach to behavioral management, allowing you to:

- Use fundamental & advanced training techniques.
- Solve common behavioral problems.
- Build training plans that really work.
- Place behaviors on cue.
- Prevent the development of fears & phobias.
- Understand animal cognition & emotions.
- Interpret animal body language & vocalizations.
- Create effective enrichment.
- Desensitize animals to new stimuli.
- Eliminate aggression or other undesirable behaviors.
- And much, much more!

The Animal Training & Enrichment certificate requires the completion of five online courses (15 academic credits) and a field requirement consisting of 40 hours of hands-on experience as an employee, intern or volunteer at an approved institution of your choice.

The required courses for this certificate program are:

- ABI 126** Animal Minds & Emotions
- ABI 222** Animal Enrichment
- ABI 233** Animal Training*

ABI 331 Animal Behavior: An Evolutionary Approach

You will also choose one elective from the following:

ABI 232 The Human-Animal Bond

ABI 238 Therapy Dog Training*

ABI 251 Behavior & Training of Marine Mammals

ABI 271 Canine Behavior & Enrichment*

ABI 272 Feline Behavior & Enrichment

ABI 281 Avian Training

Upon graduation, students may begin using the designation CATEP, Certified Animal Training & Enrichment Professional. Many of our graduates start their own businesses after obtaining their certificate, working as independent animal trainers or behavioral consultants. Other graduates find work in zoos and aquariums, the entertainment industry, shelters, kennels, veterinary practices, sanctuaries and other animal-related industries. The field of animal care and service workers, which includes animal trainers, is expected to grow at 15% over the next decade. Opportunities in training have never been greater!

The cost of the certificate program is \$6,600 (this does not include the cost of textbooks, purchased separately) Tuition assistance is available via military discounts and interest-free financing.

+ Must have access to an animal.

* Must have access to a dog.



CERTIFICATE

REQUIREMENTS & DESCRIPTIONS

CANINE SPORTS TRAINING

Certificate Program (15 credits)



The Canine Sports Training program provides you with a thorough knowledge of athletic training and conditioning techniques for dogs.

Canine sports are an increasingly important component of professional dog training. Traditional canine sports, such as agility and obedience rallies, have experienced explosive growth over the last two decades; innumerable new sports have also arisen. The Canine Sports Training

program provides you with a thorough knowledge of athletic training and conditioning techniques for dogs. You'll build a fundamental skill set used in training a wide array of specific canine sports. Sports work can be enormously beneficial to dogs; it can also provide you with an opportunity to expand your business beyond obedience training. Our comprehensive program will allow you to:

- Create a multi-step training plan using shaping or chaining to train complex tasks.
- Put canine behavior on cue.
- Understand canine communication and body language to more effectively train dogs.
- Create appropriate diets for athletic dogs undergoing training.
- Create a training schedule to promote overall health.
- Recognize the symptoms of stress that can lead to injury and how to address them.
- Train a dog to recognize specific scents and to discriminate between similar scents.
- Create a strength and conditioning program for canine athletes.
- Build multiple behavioral chains for use in canine sports.
- Reliably communicate with dogs over longer distances.
- Train dogs to work comfortably in novel situations and environments.

The Canine Sports Training certificate requires the completion of five online courses (15 academic credits) and a field requirement consisting of 40 hours of hands-on experience

as an employee, intern or volunteer at an approved institution of your choice. Field hours for the Advanced Canine Training program, the Canine Training & Behavior program, or the Service & Therapy Dog Training program can be used towards this program as well.

The required courses for this certificate program are:

- ABI 234** Canine Training*
- ABI 264** Training the Canine Athlete*
- ABI 271** Canine Behavior & Enrichment*
- ABI 274** Canine Scent Work*
- ABI 312** Canine Health & Nutrition

Upon graduation, students may begin using the designation CCSTP, Certified Canine Sports Training Professional. Many of our graduates start their own businesses after obtaining their certificate, working as independent dog trainers and behavioral consultants. Other graduates find work in kennels, animal shelters, veterinary practices, animal control agencies, sanctuaries or other dog-related organizations. The animal-care and service industry, which includes dog trainers, is expected to grow at 15% over the next decade. Opportunities in training have never been greater!

The cost of the certificate program is \$6,600 (this does not include the cost of textbooks, purchased separately). Tuition assistance is available via military discounts and interest-free financing.

* Must have access to a dog.



CERTIFICATE

REQUIREMENTS & DESCRIPTIONS

EXOTIC ANIMAL TRAINING

Certificate Program (15 credits)



Create effective enrichment plans to relieve boredom, prevent the development of stereotypical behaviors and improve welfare.

Do you dream of a career working with exotic animals? Do you want to learn how to train wild animals and understand their behavior?

The Exotic Animal Training program focuses on wildlife, rather than domestic species such as dogs and cats. Students will complete fundamental courses in animal training and behavioral enrichment, followed by their choice of specialized electives emphasizing carnivores, birds, primates or marine mammals. Graduates will be prepared to work in animal behavior and training positions at zoos, aquariums, wildlife clinics, educational centers, and the film and entertainment industries. Our comprehensive program will allow you to:

- Create training plans to teach wild animals new behaviors and to extinguish or reduce unwanted behaviors.
- Interpret animal body language & vocalizations.
- Understand and select appropriate training methods, including the use of non-food reinforcers.
- Get behaviors under stimulus control by training cues.
- Create effective presentations using appropriate animals and behaviors.
- Understand animal cognition, behavior, and emotions.
- Create effective enrichment plans to relieve boredom, prevent the development of stereotypical behaviors and improve welfare.
- And much, much more!

The Exotic Animal Training certificate requires the completion of five online courses (15 academic credits) and a field requirement consisting of 40 hours of hands-on

experience as an employee, intern or volunteer at an approved institution of your choice.

The required courses for this certificate program are:

ABI 222 Animal Enrichment

ABI 233 Animal Training⁺

You will also select three electives from the following:

ABI 251 Behavior & Training of Marine Mammals

ABI 281 Avian Training

ABI 291 Carnivore Training & Behavior

ABI 331 Animal Behavior: An Evolutionary Approach

ABI 378 Primate Behavior & Enrichment

Upon graduation, students may begin using the designation CEATP, Certified Exotic Animal Training Professional. Many of our graduates start their own businesses after obtaining their certificate, working as independent animal trainers or behavioral consultants. Other graduates find work in zoos and aquariums, entertainment and other animal-related industries. The field of animal care and service workers, which includes animal trainers, is expected to grow at 15% over the next decade.

The cost of the certificate program is \$6,600 (this does not include the cost of textbooks, purchased separately). Tuition assistance is available via military discounts and interest-free financing.

⁺ Must have access to an animal.



CERTIFICATE

REQUIREMENTS & DESCRIPTIONS

LABORATORY ANIMAL BEHAVIOR

Certificate Program
(15 credits)



The field of animal care and service workers, which includes laboratory animal technicians, is expected to grow at 15% over the next decade.

Do you want to improve the welfare of the animals in your care? Do you want to develop the skills to use animal training, behavioral enrichment and environment management with confidence? If so, our Certificate Program in Laboratory Animal Behavior is for you! Our program takes a comprehensive approach to behavioral management, allowing you to:

- Reduce stereotypical and self-injurious behavior.
- Prevent the development of fears and phobias.
- Create effective enrichment toys and devices.
- Eliminate aggression towards conspecifics or people.
- Quickly desensitize animals to new equipment or stimuli.
- Train animals to cooperate with procedures.
- Safely house animals in groups.
- And much, much more!

The Laboratory Animal Behavior certificate requires the completion of five online courses (15 academic credits) and a field requirement consisting of 40 hours of hands-on experience as an employee, intern or volunteer at an approved institution of your choice.

The required courses for this certificate program are:

- ABI 222** Animal Enrichment
- ABI 233** Animal Training⁺

You will also choose three electives from the following:

- ABI 271** Canine Behavior & Enrichment^{*}
- ABI 272** Feline Behavior & Enrichment
- ABI 291** Carnivore Training & Behavior
- ABI 375** Behavior of Rabbits & Rodents
- ABI 378** Primate Behavior & Enrichment

Upon graduation, students may begin using the designation CLABP, Certified Laboratory Animal Behavior Professional. Many of our graduates work in laboratory animal science as technicians, facility managers, researchers, coordinators, veterinarians & veterinary techs, behaviorists and enrichment specialists. The outlook for professionals in laboratory animal science is excellent. The field of animal care and service workers, which includes laboratory animal technicians, is expected to grow at 15% over the next decade. Furthermore, salaries will continue to be significantly higher in the laboratory animal field relative to the average for all animal care workers. Opportunities in laboratory animal science and behavior have never been greater!

The cost of the certificate program is \$6,600 (this does not include the cost of textbooks, purchased separately). Tuition assistance is available via military discounts and interest-free financing.

⁺ Must have access to an animal.

^{*} Must have access to a dog.



CERTIFICATE

REQUIREMENTS & DESCRIPTIONS

SERVICE & THERAPY DOG TRAINING

Certificate Program
(15 credits)



Students will develop strong skills in canine training, understanding canine communication and body language, and training dogs for specific assistance tasks.

The Service & Therapy Dog Training program is designed for professional dog trainers that would like to train dogs for various forms of assistance, with an emphasis on service training and animal assisted therapy. Students will develop strong skills in canine training, understanding canine communication and body language, and training dogs for specific assistance tasks. Our Service & Therapy Dog Training program will help you to:

- Create a multi-step training plan using shaping or chaining complex canine tasks.
- Put canine behavior on cue to control it.
- Interpret canine communication and body language to more effectively train dogs for different tasks.
- Select and assess dogs for use in service training.
- Socialize dogs to prevent or eliminate fears, phobias, and excessive reactivity.
- Train dogs for basic obedience, public access and a wide variety of specific service dog tasks.
- Working effectively with disabled individuals to facilitate training.
- And much, much more!

The Service & Therapy Dog Training certificate requires the completion of five courses and a field requirement consisting of 40 hours of hands-on experience as an employee, intern or volunteer at an approved institution of your choice.

The required courses for this certificate program are:

ABI 232 The Human-Animal Bond

ABI 234 Canine Training*

ABI 238 Therapy Dog Training*

ABI 271 Canine Behavior & Enrichment*

ABI 338 Service Dog Training*

Upon graduation, students may begin using the designation CSTDTP, Certified Service & Therapy Dog Training Professional. Many of our graduates start their own businesses after obtaining their certificate, working as independent dog trainers and behavioral consultants. Other graduates find work with service dog institutions, sanctuaries or other dog-related organizations. Alternatively, they may incorporate their training into existing positions in education, therapy or counseling. The animal care and service industry, which includes animal trainers, is expected to grow at 15% over the next decade. Opportunities in training have never been greater!

The cost of the certificate program is \$6,600 (this does not include the cost of textbooks, purchased separately). Tuition assistance is available via military discounts and interest-free financing.

* Must have access to a dog.



CERTIFICATE

REQUIREMENTS & DESCRIPTIONS

WILDLIFE REHABILITATION

Certificate Program (15 credits)



The ultimate goal is to return healthy animals to the wild by fostering their release into appropriate habitats.

Do you want to work with injured or orphaned wildlife? Do you want to develop the skills to rehabilitate and release wild animals? Do you dream of one day opening your own rehabilitation center? If so, our Certificate Program in Wildlife Rehabilitation is for you! Our comprehensive program will help you to:

- Administer first aid and medical care to injured wildlife.
- Identify and treat wounds, burns and fractures.
- Create proper diets based on sound nutrition.
- Minimize the risk of disease transmission.
- Create effective educational programs.
- Safely handle, transport and train wildlife for use in environmental education.
- Build appropriate housing and exhibits.
- Manage human-wildlife conflicts.
- Prepare for state wildlife rehabilitation exams.
- And much, much more!

The Wildlife Rehabilitation certificate requires the completion of five online courses (15 academic credits) and a field requirement consisting of 40 hours of hands-on experience as an employee, intern or volunteer at an approved institution of your choice.

The required courses for this certificate program are:

- ABI 142** Environmental Education & Outreach
- ABI 214** Principles of Wildlife Rehabilitation
- ABI 262** Wildlife Management
- ABI 311** Animal Nutrition, Health & Disease

You will also select one elective from the following:

- ABI 222** Animal Enrichment
- ABI 233** Animal Training⁺
- ABI 281** Avian Training
- ABI 331** Animal Behavior: An Evolutionary Approach

Upon graduation, students may begin using the designation CWRP, Certified Wildlife Rehabilitation Professional. Some graduates open their own business in wildlife education or management. Others work in sanctuaries, private clinics or as part of a larger institution such as a zoo, aquarium or museum. Opportunities range from volunteering in an existing institution to opening your own wildlife sanctuary.

The cost of the certificate program is \$6,600 (this does not include the cost of textbooks, purchased separately). Tuition assistance is available via military discounts and interest-free financing.

+ Must have access to an animal.



CERTIFICATE

REQUIREMENTS & DESCRIPTIONS

ZOOKEEPING

Certificate Program (15 credits)



Learn to train animals while building conservation programs that foster good stewardship.

Do you want to become a zoo keeper? Do you dream of working with carnivores, primates, marine mammals or other exotic wildlife? If so, our Certificate Program in Zookeeping is for you! Our program takes a comprehensive approach to the management and care of zoo animals, allowing you to:

- Obtain a position as a zoo keeper.
- Learn to safely handle and train wildlife.
- Train animals to voluntarily participate in procedures.
- Design new exhibits and housing.
- Create behavioral enrichment programs.
- Manage breeding programs to promote health & genetic diversity.
- Create proper diets based on sound nutrition.
- Minimize the risk of disease transmission.
- Create engaging educational programs.
- Build conservation programs that foster good stewardship.
- And much, much more!

The Zookeeping certificate requires the completion of five online courses (15 academic credits) and a field requirement consisting of 40 hours of hands-on experience as an employee, intern or volunteer at an approved institution of your choice.

The required courses for this certificate program are:

ABI 142 Environmental Education & Outreach

ABI 221 Husbandry & Record Keeping

ABI 242 Exotic Animal Management & Conservation

ABI 311 Animal Nutrition, Health & Disease

You will choose one elective from the following:

ABI 222 Animal Enrichment

ABI 233 Animal Training⁺

ABI 251 Behavior & Training of Marine Mammal

ABI 281 Avian Training

ABI 291 Carnivore Training & Behavior

ABI 378 Primate Behavior & Enrichment

Upon graduation, students will earn their certificate and may begin using the designation CZKP, Certified Zookeeping Professional. Most graduates go on to obtain positions as zoo keepers or zoo educators. Others work as nutritionists, animal trainers, aquarists or curators. The field of animal care and service workers, which includes zoo keepers and animal trainers, is expected to grow at 15% over the next decade. But competition for zoo positions will remain keen in the future; let ABI give you the competitive advantage you need to succeed!

The cost of the certificate program is \$6,600 (this does not include the cost of textbooks, purchased separately). Tuition assistance is available via military discounts and interest-free financing.

⁺ Must have access to an animal.

learningpartner

ASSOCIATION
OF ZOOS &
AQUARIUMS

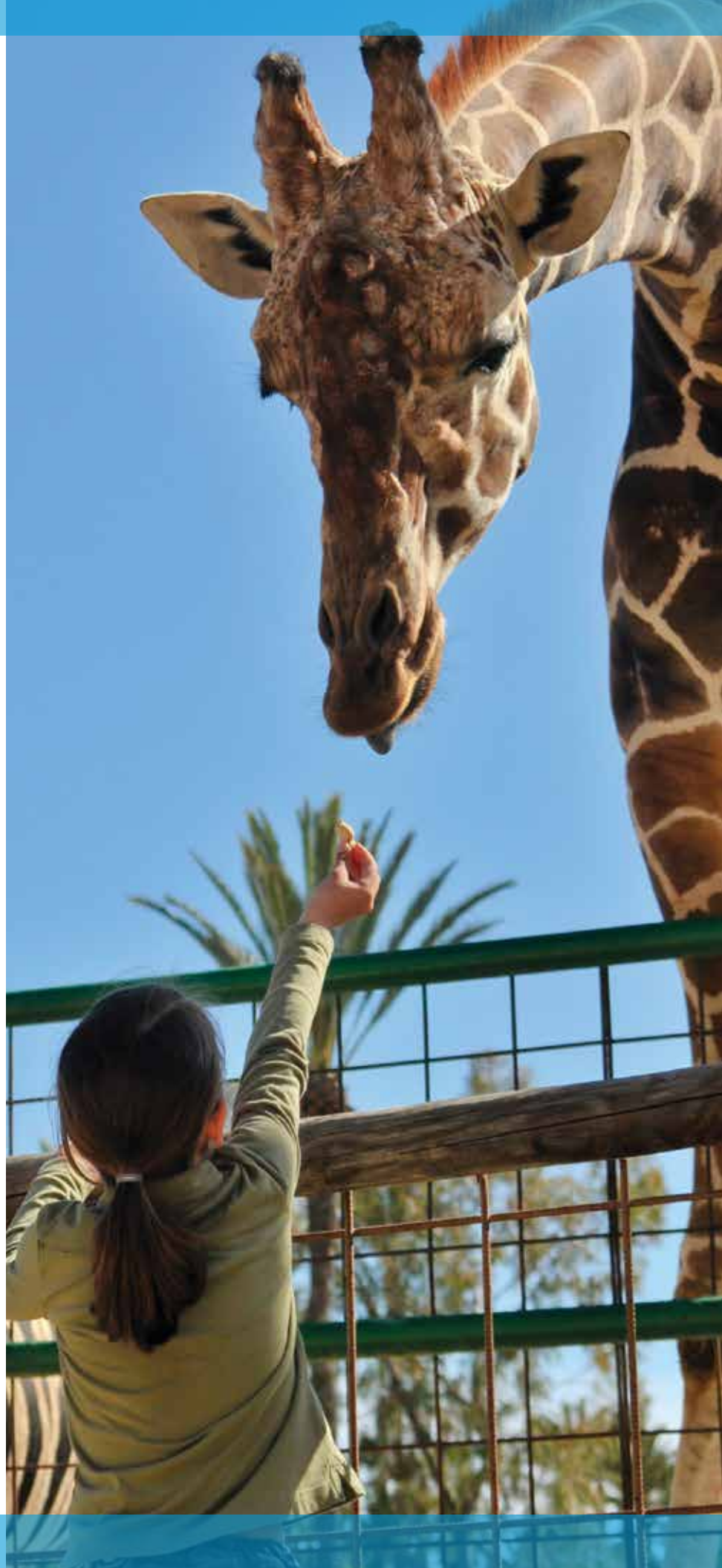
Association of Zoos & Aquariums (AZA)

The Animal Behavior Institute is one of the few select institutions to be chosen as a Learning Partner of the AZA. The professional ties between our two organizations allow you to use many of the courses offered by ABI as electives in the Professional Development Certificates offered by the Association of Zoos & Aquariums. Please visit our ABI-AZA Learning Partners site for more information.



American Association of Zoo Keepers (AAZK)

The Animal Behavior Institute is proud to be an institutional member of the American Association of Zoo Keepers. We support their mission of fostering professional education among zoo keepers and ultimately global conservation & stewardship.



CERTIFICATE

REQUIREMENTS & DESCRIPTIONS

CANINE TRAINING & BEHAVIOR

**Specialized Certificate
(9 credits)**



Many of our graduates start their own businesses after obtaining their certificate, working as independent dog or cat trainers and behavioral consultants.

Would you like to start a rewarding new career in dog training? Do you want an education in this field that goes beyond simple obedience training? If so, our Specialized Certificate in Canine Training & Behavior is for you! Our comprehensive program will allow you to:

- Use fundamental & advanced training techniques.
- Solve common behavioral problems such as barking and leash pulling.
- Work with diverse clients.
- Interview for solutions.
- Build training plans that really work.
- Administer first aid, CPR and handle medical emergencies.
- Understand behavioral development in puppies and younger dogs.
- Enrich different species of dogs.
- Comprehend canine communication and body language.
- Manage sexual behavior and reproduction.
- Handle aggressive behavior in dogs.
- Create appropriate diets and offer nutritional counseling.
- Treat fears and phobias.
- And much, much more!

The specialized certificate in Canine Training & Behavior requires the completion of three online courses (9 academic credits) and a field requirement of 40 hours of hands-on experience as an employee, intern or volunteer at an approved institution of your choice.

The required courses for this specialized certificate program are:

ABI 234 Canine Training*

ABI 271 Canine Behavior & Enrichment*

ABI 312 Canine Health & Nutrition

Upon graduation, students may begin using the designation CCTBS, Certified Canine Training & Behavior Specialist. Many of our graduates start their own businesses after obtaining their certificate, working as independent dog trainers and behavioral consultants. Other graduates find work in kennels, animal shelters, veterinary practices, animal control agencies, service dog institutions, rescues or other dog-related organizations. The animal care and service industry, which includes animal trainers, is expected to grow at 15% over the next decade. Opportunities in training have never been greater!

The cost of the certificate program is \$3,960 (this does not include the cost of textbooks, purchased separately). Tuition assistance is available via military discounts and interest-free financing.

* Must have access to a dog.



CERTIFICATE

REQUIREMENTS & DESCRIPTIONS

EQUINE BEHAVIOR & MANAGEMENT

Specialized Certificate
(9 credits)



Many of our graduates start their own businesses after obtaining their certificate, working as independent trainers and behavioral consultants.

The Equine Behavior & Management program is designed for horse trainers, owners and enthusiasts that would like to develop a deeper understanding of equine behavior, including cognition, emotions, health and nutrition. Our comprehensive program will improve the management of the horses in your care, enhancing their welfare and producing a stronger human-equine bond. Your specialized training will allow you to:

- Create and implement training plans to teach horses new behaviors and to extinguish or reduce unwanted behaviors.
- Identify signs of stress and boredom in horses; create an environment, including an active training program, to reduce stress.
- Select the most appropriate equipment and techniques to minimize anxiety during training.
- Interpret equine sounds and body language in order to improve human-equine communication.
- Develop a detailed understanding of equine sensory systems and how horses process information.
- Create an effective diet based on an animal's age, sex, reproductive condition, and activity.
- Recognize common ailments and their symptoms.
- Develop a firm understanding of equine social behavior, including dominance, herd structure, reproductive behavior, parental behavior, and courtship.

The specialized certificate in Equine Behavior & Management requires the completion of three online courses (9 academic credits) and a field requirement of 40 hours of hands-on experience as an employee, intern or volunteer at an approved institution of your choice.

[The required courses for this specialized certificate program are:](#)

ABI 127 Equine Minds & Emotions

ABI 237 Equine Behavior

ABI 317 Equine Health & Nutrition

Upon graduation, students may begin using the designation CEBMS, Certified Equine Behavior & Management Specialist. Many of our graduates start their own businesses after obtaining their certificate, working as independent trainers and behavioral consultants. Other graduates find work at riding stables, training facilities, or equestrian centers. The animal care and service industry, which includes animal trainers, is expected to grow at 15% over the next decade. Opportunities in training have never been greater!

The cost of the certificate program is \$3,960 (this does not include the cost of textbooks, purchased separately). Tuition assistance is available via military discounts and interest-free financing.



CERTIFICATE

REQUIREMENTS & DESCRIPTIONS

FELINE TRAINING & BEHAVIOR

Specialized Certificate
(9 credits)



Many of our graduates start their own businesses after obtaining their certificate, working as independent dog or cat trainers and behavioral consultants.

Would you like to start a rewarding new career in cat training? Do you want to understand their behavior, drives, and emotions? If so, our Specialized Certificate in Feline Training & Behavior is for you! Our comprehensive program goes beyond simple problem solving; your training will allow you to:

- Use fundamental & advanced training techniques.
- Work with diverse clients.
- Interview for solutions.
- Build training plans that really work.
- Administer first aid, CPR and handle emergencies.
- Solve common behavioral issues, such as scratching and elimination.
- Understand behavioral development in kittens and younger cats.
- Comprehend feline communication and body language.
- Manage sexual behavior and reproduction.
- Handle aggressive behavior in cats.
- Create appropriate diets and offer nutritional counseling.
- Treat fears and phobias.
- And much, much more!

The specialized certificate in Feline Training & Behavior requires the completion of three online courses (9 academic credits) and a field requirement of 40 hours of hands-on experience as an employee, intern or volunteer at an approved institution of your choice.

Please note that the Animal Behavior Institute is the only institution of higher learning to offer specialized programs tailored to the needs of cat behaviorists and trainers.

The required courses for this specialized certificate program are:

ABI 235 Feline Training

ABI 272 Feline Behavior & Enrichment

ABI 313 Feline Health & Nutrition

Upon graduation, students will earn their certificate and may begin using the designation CFTBS, Certified Feline Training & Behavior Specialist. Many of our graduates start their own businesses after obtaining their certificate, working as independent cat trainers and behavioral consultants. Other graduates find work in kennels, animal shelters, veterinary practices, animal control agencies, rescues or other cat-related organizations. The animal care and service industry, which includes animal trainers, is expected to grow at 15% over the next decade. Opportunities in training have never been greater!

The cost of the certificate program is \$3,960 (this does not include the cost of textbooks, purchased separately). Tuition assistance is available via military discounts and interest-free financing.



COURSE DESCRIPTIONS & OBJECTIVES



The Environmental Education & Outreach course will provide guidance in producing effective talks, presentations and graphics - helping you to effectively reach your audience.



The course Animal Assisted Interventions will cover working with animals and children, adults, the elderly, and the disabled in various settings including hospitals, nursing homes, schools and prisons.

ABI 117 - Working with People and Animals

Careers working with animals also require working with people. Understanding people and interpersonal relationships is critical to every successful career. This course will focus on understanding how people relate to each other, how to work successfully with others, and how to manage the professional issues that arise when working with people and animals. Discussions will cover emotions, learning, motivation, perception and body language. Real case studies will be used to further develop the skills you'll be using in this course.

Course Outcomes:

- Develop a basic understanding of personality types and how to work with them.
- Deal more effectively with difficult people.
- Understand the factors that influence the success of home therapy animals.
- Motivate others and encourage desired behaviors.
- Correctly interpret human body language and vocal patterns.
- Recognize the cues that indicate a person or animal is experiencing discomfort, and how you can address the problem.

ABI 126 - Animal Minds & Emotions

Animal lovers and pet owners have long known what behaviorists have only recently acknowledged: that animals are sentient beings, possessing minds, emotions, and immense cognitive abilities. We will explore the evidence for animal cognition and emotions, particularly with respect

to animal training, enrichment, and welfare.

Course Outcomes:

- Compare and contrast the differences between human vs. animal perception, including sensory and processing differences.
- Recognize the primary and secondary core emotions in animals.
- Distinguish and manage different forms of animal aggression.
- Learn how fear develops in animals and how to manage it successfully.
- Develop a better understanding of animal communication and language.
- Learn how animals "think" - their cognitive functions.

ABI 127 - Equine Minds & Emotions

Horses have complex behaviors and individual personalities; yet too little consideration has been given to their emotions, body language and the indirect ways that they communicate with us. In this course we will focus on equine psychology and how to interpret the environment from the equine point of view. This will include an in-depth review of sensory systems, emotions, learning and development.

Course Outcomes:

- Assess, identify, and interpret equine body language.
- Analyze equine emotions and use them effectively in equine management.
- Explain the development of equine behavior and personality.
- Develop an understanding of equine ethology and psychology.

- Describe equine sensory systems and explain how horses interpret sensory input.

ABI 142 - Environmental Education & Outreach

Gone is the day when animal care staff could work in isolation, ignoring the public and leaving educational efforts to others. Today's keepers are a vital part of environmental education. Through keeper talks, shadowing, and formal presentations the animal care staff at nearly all institutions contribute to the public's understanding of animal care and conservation. This course will provide guidance in producing effective talks, presentations and graphics - helping you to effectively reach your audience.

Course Outcomes:

- Determine and employ the most effective methods to communicate and network with different audiences.
- Build environmentally responsible behavior through a variety of educational techniques.
- Evaluate conservation programs in relation to their objectives.
- Design effective questionnaires and methodologies.
- Modify programs based on pilot testing.
- Serve as a resource for schools, connecting classes with conservation and tying conservation education programs to academic standards.

ABI 211 - Animal Assisted Interventions

There is a rapidly growing movement to incorporate animals as

part of the therapeutic setting. Students will learn about the difference between animal assisted activities, therapy and education (AAAT/E), working animals and assistance animals. The course will cover working with animals and children, adults, the elderly, and the disabled in various settings including hospitals, nursing homes, schools and prisons. We will also review what is required to start and run a safe, effective program.

Course Outcomes:

- Learn the diverse ways in which Animal Assisted Activities can be incorporated into health care and education settings.
- View animal assisted activities from the perspective of the client, handler, and animal.
- Build the components of a safe and effective AAAT/E program.
- Acquire the skills necessary to participate in an AAAT/E program.
- Understand the benefits and concerns of using AAAT/E.

ABI 214 - Principles Of Wildlife Rehabilitation

A comprehensive course covering rehabilitation methods, physiology, housing, treatment, and husbandry of terrestrial vertebrate wildlife (mammals, birds, reptiles and amphibians). Nutrition and disease will be reviewed only briefly as these topics are covered elsewhere in the program. Ethics and standards will also be included and will be an integral part of class discussions.

Course Outcomes:

- Recognize and deal with emergency situations, such as shock.

- Calculate fluid needs for an animal and select the best route of administration.
- Identify and treat different types of wounds in wildlife.
- Establish good sanitation practices to reduce the risk of disease; recognize symptoms of common zoonoses.
- Determine the nutrient requirements for an animal and formulate the proper diet based on species, health and condition.
- Determine correct size for wildlife housing under a variety of health conditions.
- Assess wildlife for potential release or reintroduction to the wild.

ABI 221 - Husbandry & Record Keeping

Proper management of wild animals in captivity requires a thorough understanding of both general principles of care and specific husbandry practices. Furthermore, proper communication, often via record keeping, is also a key component of animal care and welfare. We will review methods of tracking and maintaining quality data on all aspects of husbandry.

Course Outcomes:

- Communicate the principles of safety in zoo and aquarium environments.
- Facilitate good communication.
- Manage behavior to maximize breeding success.
- Implement sound sanitation practices.
- Formulate the correct diet for different species.
- Know the basics of record keeping and be familiar with related software.

COURSE DESCRIPTIONS & OBJECTIVES



The Human-Animal Bond course explores the history and psychology of human relationships with animals and nature.



You will learn how to build effective training plans for use as a professional trainer or to share with clients.

ABI 222 - Animal Enrichment

Behavioral and environmental enrichment will be explored in a comprehensive approach. This will include an overview of animals' psychological needs, a systematic approach for coupling enrichment solutions to animal problems, practical suggestions on design and application, and a discussion of assessment and long-term application. Major components of enrichment will be reviewed with respect to the Animal Welfare Act and the principles of animal management.

Course Outcomes:

- Establish effective goals/objectives for an animal enrichment program.
- Develop a process for creating and approving new animal enrichment items at your institution.
- Measure or evaluate the effectiveness of enrichment items or methods.
- Understand the role that sociality and training play in the enrichment process.
- Design effective enrichment and evaluate items for safety hazards.
- Learn multiple methods to address enrichment issues, including furniture, caging setup, foraging opportunities, etc.
- Assessment & Learning

ABI 232 - The Human-Animal Bond

This course explores the history and psychology of human relationships with animals and nature. The student will learn about the relationship between people and animals by discussing domestication, socialization,

religion, culture, farming, research, and companion animals. Other topics include pet overpopulation, relinquishment, bonding, and health benefits from the bond (for people and animals). The principal objective is to gain an understanding of the various roles animals play in our lives.

Course Outcomes:

- Understand the complexity of the human-animal bond and how it has changed over time.
- Describe the ethical issues surrounding animals in society.
- Describe the benefits of human-animal interaction to both animals and people.
- Understand legal standing of animals in society and how it impacts their use.
- Become aware of potential problems in human-animal interaction.
- Manage all components of human-animal interactions.

ABI 233 - Animal Training*

This course explores operant conditioning and the basic principles of animal psychology and learning theory. Students will learn how to use these principles to train domestic and exotic animals to improve their captive husbandry and psychological well-being.

Course Outcomes:

- Create and implement an effective training plan for a wide variety of behaviors and species.
- Apply different schedules and forms of reinforcement to training.
- Develop an understanding of the extinction process and how it can be used in training.

- Distinguish between time outs, negative reinforcement, avoidance learning and DRO; apply each properly during training.
- Put behaviors on cue.
- Learn how animals form memories and the factors that influence retention.

ABI 234 - Canine Training*

This course offers a detailed study of canine training, incorporating a wide variety of tools and techniques. You will learn how to build effective training plans for use as a professional trainer or to share with clients. We will tackle difficult behavioral problems in a variety of settings. Each student will train a new dog behavior during the course of the semester, under the supervision of their instructor. The course will also incorporate material on working with owners, interviewing families for solutions, and building a new business in dog training.

Course Outcomes:

- Develop a working knowledge of dog breeds and the equipment used in dog training.
- Correctly read and interpret the body language & communication signals of dogs.
- Eliminate undesirable behaviors.
- Train a diverse array of behaviors; overcome common stumbling blocks.
- Create multi-step training plans using shaping or chaining.
- Put a behavior on cue.
- Develop your own business in canine training or related activities.
- Work with a diverse group of

clients and develop their compliance with training.

ABI 235 - Feline Training

This course offers a detailed study of feline training, incorporating a wide variety of tools and techniques. You will learn how to build effective training plans for use as a professional trainer or to share with clients. We will tackle difficult behavioral problems in a variety of settings. Each student will train a new cat behavior during the course of the semester, under the supervision of their instructor. The course will also incorporate material on working with owners, interviewing families for solutions, and building a new business in cat training.

Course Outcomes:

- Understand basic feline behavior.
- Introduce new cats to the same household without creating problem behavior.
- Effectively manage feline aggression towards humans and other cats.
- Eliminate problem urination, spraying, and related behavioral issues.
- Establish a new relationship between a stimulus and response.
- Select a reinforcement schedule appropriate to the training goals.
- Create a multi-step training plan using shaping or chaining.
- Put a behavior on cue to control it.

ABI 237 - Equine Behavior

This course provides a comprehensive review of equine behavior as it applies to training and management. We will review individual behaviors, such as body care and

grooming, as well as group behaviors, including communication, play and social behavior. Emphasis will also be placed on the practical components of management, including proper handling, problem solving and the resolution of unwanted behaviors.

Course Outcomes:

- Understand equine behavior and the difference between normal and abnormal behavior.
- Compare and contrast distinct horse breeds and understand how their physical and behavioral attributes make them suitable for a variety of activities and training.
- Recognize best practices for horse management including socialization, foraging needs, and body care.
- Identify how the sensory perceptions of horses can influence successful communication and training.
- Apply the principles of good handling.
- Create training plans that positively shape learning and reduce unwelcome behaviors.
- Define learning theory principles and guidelines for training and the overall benefits of equitation science.



COURSE DESCRIPTIONS & OBJECTIVES



The Therapy Dog Training course offers an in-depth look at how to choose, prepare, and train a dog to become a therapy dog in animal assisted therapy or activities.



Conservation efforts, including Species Survival Plans (SSP), will be reviewed with an emphasis on the roles of zoos and aquariums.

ABI 238 - Therapy Dog Training

This course offers an in-depth look at how to choose, prepare, and train a dog to become a therapy dog in animal assisted therapy or activities. You will learn the characteristics of dogs and handlers that are necessary to form an effective working team. We will discuss the advantages of belonging to a national therapy animal group along with their rules and regulations and what you should expect on a visit. The course will also teach the obedience commands required of therapy dogs.

Course Outcomes:

- Understand what personality and temperament types are best suited for therapy work both in the dog and the handler.
- Correctly read and interpret dog body language, particularly in regard to stress signals, to be the best advocate for your dog.
- Socialize and train both the required behaviors and some additional helpful behaviors to enhance your therapy visits.
- Understand what the major organizations require to be a registered team.
- Know how to prepare for the required evaluation to become a visiting team.
- Determine what type of program would be the best fit for your team.
- Know what's involved in the typical visit including what atypical events might occur and how to handle them.
- Understand what steps it takes to become an evaluator for a national or local therapy animal group or an instructor of a group class or organization.

ABI 242 - Exotic Animal Management & Conservation

In this course we will explore population management from a regional and global perspective. Conservation efforts, including Species Survival Plans (SSP), will be reviewed with an emphasis on the roles of zoos and aquariums. Education, captive breeding, natural reintroduction, endangered species protection, and human-animal conflict will be covered with respect to their impact on population management.

Course Outcomes:

- Manage a captive population of animals to promote genetic diversity.
- Describe Species Survival Plans and explain how they are implemented in zoos and other organizations.
- Know which organizations are responsible for federally regulating or accrediting zoos and aquariums and which acts are enforced.
- Explain the special challenges related to caring for elephants and primates.
- Implement educational programming in the zoo or aquarium environment.
- Explain the relationship between attendance and the success of a zoo or aquarium.

ABI 251 - Behavior & Training of Marine Mammals

We will explore how operant conditioning and training techniques can be used to train a variety of marine mammals, such as dolphins, sea lions and sea otters. The course will also include a discussion of the field of marine mammal training and guidance on how to break into this competitive field.

Course Outcomes:

- Develop a “tool bag” of training techniques applicable to marine mammals.
- Train complex behaviors in marine mammals, including husbandry procedures, exercise, mental stimulation, and veterinary care.
- Write and implement a quality training plan.
- Troubleshoot your own training or the training of others.
- Learn advanced training issues, such as working with aggression or training multiple animals simultaneously.
- Prepare for a career in the marine mammal field and improve your ability to obtain internships and paid positions.

ABI 254 - Canine Aggression

This course will delve into a topic in dog training and consulting that most people have encountered either personally or professionally – aggression. Body language and learning theory will be reviewed, but with an emphasis on aggressive displays and counter conditioning. You will learn how to identify the different types of aggression and the legalities and liabilities that are involved in working such cases both as a consultant and for the owners. Since working with aggressive dogs can pose a risk, safety precautions including how to prepare for the initial consult and how to break up a dog fight will be covered as well as management and how to effectively get optimum owner compliance. Numerous protocols and techniques will be discussed as well as when you may need to seek out

more options or guidance from veterinarians and vet behaviorists.

Course Outcomes:

- Contrast the different types of aggression including possible causes and how they can overlap.
- Recognize the warning signs of aggression in regards to canine body language.
- Identify best safety practices when working with aggressive dogs including how to safely break up a dog fight.
- Prepare and conduct an initial aggression consult.
- Write a behavior modification plan for an aggression case using a variety of techniques, tools and protocols.
- Manage an aggressive dog while a behavioral plan is being implemented, including owner compliance.
- Determine when it is necessary to seek the guidance of a vet behaviorist or certified animal behaviorist for medicinal intervention.
- Describe the legalities and liability issues of owning and/or working with aggressive dogs.

ABI 261 - Equine Assisted Activities & Therapies

This course serves as an introduction to the field of equine assisted activities and therapies and will explore the historical and theoretical foundations of therapeutic interactions with horses. Students will learn how to conceptualize and explain therapeutic benefits, risks and safety precautions, and recognize best practices associated with equine assisted activities. Particular emphasis will be placed on understanding the benefits of the horse-human interaction.

Course Outcomes:

- Understand existing theories that explain the therapeutic benefit of horses.
- Define differences and similarities between equine therapy modalities.
- Identify situations where equine therapy is beneficial.
- Recognize common risks associated with equine activities and implement safety precautions.
- Select appropriate empirically supported techniques to meet client needs.
- Recognize best practices and credentialing associated with equine assisted activities.



We will explore how operant conditioning and training techniques can be used to train a variety of marine mammals, such as dolphins, sea lions and sea otters.

COURSE DESCRIPTIONS & OBJECTIVES



Proper management of wild animals in captivity requires a thorough knowledge of natural history, population management, and habitat management.



In the Training the Canine Athlete course, we will cover the principles of sound training together with a review of the most popular canine sports. You'll learn how to put together an ideal training schedule to help your dog reach their potential.

ABI 262 - Wildlife Management

Proper management of wild animals in captivity requires a thorough knowledge of natural history, population management, and habitat management. We will cover these areas with particular emphasis on topics relevant to the release and reintroduction of wildlife, including habitat assessment, carrying capacity and human-wildlife conflict.

Course Outcomes:

- Use an integrated approach to the different techniques of wildlife management.
- Manage human-wildlife conflict in suburban neighborhoods.
- Mitigate or reduce the impact of wildlife on agriculture.
- Understand the differences between diversion, exclusion and habitat manipulation.
- Compare and contrast different estimators for population size and choose the most effective technique.
- Assess habitat for its potential value for wildlife release or reintroduction.

ABI 264 - Training the Canine Athlete'

Canine sports have become extremely popular, but how do you train your dog to reach peak performance while minimizing the risk of injury? In this course, we will cover the principles of sound training together with a review of the most popular canine sports. You'll learn how to put together an ideal training schedule to help your dog reach their potential. We'll also cover training techniques for a number of

specific canine sports.

Course Outcomes:

- Compare and contrast different dog sports and their fitness considerations.
- Understand the different components of fitness and which are important for different dog sports and activities.
- Learn how to prevent injuries.
- Know what non-fitness skills are important for a successful canine athlete.
- Develop a process for designing fitness plans and schedules.

ABI 267 - Equine Training

This course will build a strong foundation in behavioral modification and then covers the application of these basic skills to an array of topics in equine training and behavior. Students will be able to create training programs to promote equine health and athleticism, taking into account the size, age, breed and condition of the horse. We will evaluate the relative advantages of the most common training methods.

Course Outcomes:

- Understand basic safety practices to ensure positive horsemanship.
- Explain the role of training aids and signals in improving communication with horses.
- Write a behavioral modification plan that incorporates use of the clicker or another positive reinforcer.
- Recognize best practices for training young or challenging horses.
- Compare and contrast the methods used in positive reinforcement vs. more traditional training approaches.

- Create detailed training plans for teaching a horse new behaviors that are specific to groundwork, driving and riding.
- Describe and understand different training techniques used in groundwork, riding and specifically specialty riding such as dressage.
- Explain several ways to problem solve unwanted behaviors and the training methods that are most effectively used to address the individual behaviors.

ABI 271 - Canine Behavior & Enrichment*

The effective training and husbandry of dogs requires that we understand their communication signals, recognize signs of stress and aggression, and take a proactive stance in preventing the development of stereotypical or self-destructive behavior. This course will focus on canine body language, communication and behavior. We will review how enrichment and socialization can be used to address behavioral issues in a variety of captive settings from laboratories to dog day care.

Course Outcomes:

- Understand the social organization and mental development of young dogs.
- Categorize breeds according to their behavioral needs and enrich them accordingly.
- Treat or prevent the development of canine fears and phobias.
- Create effective enrichment plans that will meet the needs of dogs based on breed and housing.
- Distinguish different forms of aggression and create effective

plans for management.

- Understand the different sexual and maternal behaviors in dogs and how to maximize breeding success.

ABI 272 - Feline Behavior & Enrichment

While most species of cat are relatively asocial, they still have social needs. We will take an in-depth look at feline behaviors, communication, and body language. Enrichment and training will be discussed in light of managing cats in the home, lab, or zoo environment. However, emphasis will be on the domestic cat (*Felis catus*). Specific enrichment strategies will be evaluated for their effectiveness in treating or preventing problem behaviors in captivity.

Course Outcomes:

- Understand the physical and mental development of young cats.
- Recognize normal and problem behaviors in cats and create effective treatment plans.
- Treat or prevent the development of feline fears and phobias.
- Create effective enrichment plans that will meet the needs of cats based on housing and use.
- Distinguish different forms of aggression and form effective plans for management.
- Understand the different sexual and maternal behaviors in cats and how to maximize breeding success.

ABI 274 - Canine Scent Work*

The amazing olfactory ability of dogs is well known; they have been tracking and hunting with humans since

their domestication. But how can we effectively develop these skills? In this course, we will learn how to train dogs for scent detection, discrimination, and tracking. These skills are clearly the bedrock of canine roles in bomb or drug detection, tracking, and search & rescue. But they also present opportunities for increasingly popular sports, titles, and novel forms of canine competition.

Course Outcomes:

- Understand odor theory and how the environment and factors like air movement affect scent training and searches.
- Select appropriate training steps to progress scent work skills in dogs and build in challenges at the right level for the dog.
- Identify issues such as missed or false alerts and know ways to address these issues in training.
- Create training plans for the different search elements of container, interior, exterior, and vehicle searches.
- Apply the concepts of imprinting and building value for odor to both nose work and tracking.
- Understand how to build a solid working relationship with a scent dog.



COURSE DESCRIPTIONS & OBJECTIVES



Avian Training will introduce the student to the training, management and behavior of birds in captivity, with an emphasis on parrots and raptors.



Nutritional counseling can be an excellent supplement to canine training; the skills you develop in the nutrition course will increase the value of your training to owners and potential clients.

ABI 281 - Avian Training

Avian Training will introduce the student to the training, management and behavior of birds in captivity, with an emphasis on parrots and raptors. The course will cover a wide range of training applications, including husbandry, flight training, vocalizations, and educational programming. Students will learn how to train new behaviors and to manage undesirable behaviors such as aggression, plucking and screaming.

Course Outcomes:

- Compare and contrast species-specific husbandry training and appropriate equipment for different types of birds (e.g. Psittacines, Raptors, Corvids).
- Select appropriate program birds to create effective formal and/or informal presentations.
- Identify signs of stress & boredom in birds and create an environment and training program to reduce stress.
- Create training plans to teach birds new behaviors and to extinguish or reduce unwanted behaviors.
- Understand and select appropriate training motivators and understand how weight management affects behavior.
- Identify steps and best practices in training birds for free flight.
- Apply the concepts of extinction, reinforcement and/or punishment to treat aggressive behavior.
- Evaluate parrot behavior to consult owners on how to solve common problem behaviors including but not limited to screaming, plucking, and biting.

ABI 284 - Building Your Dog Training Business

Once you've mastered the art of dog training, how do you translate this into a successful career? In this course, you will learn the art of building a dog training business. We'll start with the basics of legally creating your company and move through the steps needed to produce and implement an effective marketing plan. We'll conclude with an analysis of your potential clients and how to grow your business further through referrals and partnerships.

Course Outcomes:

- Determine the best structure or form of organization for your business objectives.
- Identify your niche market in dog training and/or other related businesses.
- Develop a marketing plan that includes a target audience.
- Build a training program that includes group and private lessons, together with pricing.
- Create scripts as starting points for use in email and telephone campaigns.
- Write effective website copy and use search engine optimization techniques to increase traffic.
- Establish a payment system for accepting payments from clients.
- Use Google, Facebook, and other social media platforms to build a following and/or create ads to increase your brand's exposure.
- Cultivate relationships with veterinarians and other professionals; build a professional referral network.

ABI 291 - Carnivore Training & Behavior

Carnivore Training & Behavior will introduce the student to the training, management and behavior of carnivores in captivity. The course will cover a wide range of training applications, including husbandry, educational programming, and weight management. Students will learn how to train new behaviors and to manage undesirable behaviors such as inter and intra-specific aggression.

Course Outcomes:

- Understand how species-specific carnivore behavior can affect training.
- Select appropriate animals and behaviors to create effective programs for guests.
- Identify signs of stress & boredom in carnivores and create an environment to reduce stress.
- Teach carnivores new behaviors and extinguish or reduce unwanted behaviors.
- Understand and select appropriate training motivators.
- Apply the concepts of extinction, reinforcement and/or punishment to solve problem behaviors.
- Identify best safety practices when working with carnivores.

ABI 311 - Animal Nutrition, Health & Disease

This course in animal health will review pathology and the disease process. However, prevention is the key to animal health, and proper nutrition is the cornerstone of that process. Thus, we will review general principles of nutrition and then explore the impact of ecology and

life history on nutritional requirements across the animal kingdom.

Course Outcomes:

- Understand the basics of animal nutrition, such as macronutrients, micronutrients and vitamins.
- Develop an understanding of the relationship between wild diets and how they influence captive diets.
- Recognize nutritional diseases by their symptoms and know how to treat them.
- Know where to find appropriate references for additional information on nutrition, health and disease.
- Construct an appropriate diet for a wide variety of animals, including correct caloric and nutritive content.

ABI 312 - Canine Health & Nutrition

Canine Health and Nutrition will provide you with the information and skills you need to make informed decisions about your dog's diet, nutrition, safety and overall health. Nutritional counseling can be an excellent supplement to canine training; the skills you develop in this course will increase the value of your training to owners and potential clients. We will start with the fundamentals of good nutrition and then review specific canine needs and how they can be best met over the life of your dog. Health coverage will include basic first aid, CPR and emergency procedures.

Course Outcomes:

- Select the most nutritious prepared pet foods for dogs of any weight, condition or age.
- Create healthy diets from raw

ingredients.

- Evaluate the nutritive needs of dogs with medical conditions.
- Create a healthy physical and social environment for your dog.
- Recognize common ailments and treat simple health issues.
- Effectively respond to emergency situations, such as choking or severe cuts.
- Perform CPR on your dog.

ABI 313 - Feline Health & Nutrition

Feline Health and Nutrition will provide you with the information and skills you need to make informed decisions about your cat's diet, nutrition, safety and overall health. Nutritional counseling can be an excellent supplement to feline training; the skills you develop in this course will increase the value of your training to owners and potential clients. We will start with the fundamentals of good nutrition and then review specific feline needs and how they can be best met over the life of your cat. Health coverage will include basic first aid, CPR and emergency procedures.

Course Outcomes:

- Select the most nutritious prepared pet foods for cats of any weight, condition or age.
- Create healthy diets from raw ingredients.
- Evaluate the nutritive needs of cats with medical conditions.
- Create a healthy physical and social environment for your cat.
- Effectively respond to emergency situations, such as choking or severe cuts.
- Perform CPR on your cat.

COURSE DESCRIPTIONS & OBJECTIVES



Upon completion, students will have a detailed understanding of how to evaluate or begin their own equine businesses.



Students will go far beyond simply designing a training plan by learning how to incorporate principles of behavioral science to identify training goals, and to develop and evaluate assessment and treatment programs for dogs.

ABI 315 Shelter Animal Health & Nutrition

In this course on shelter animal health and nutrition we will focus on cats and dogs, as these are the most common shelter animals by far. We'll review general principles of nutrition and their direct application to the anatomy of cats and dogs as well as proper emergency care to help secure the health of the animal when the unforeseen happens. However, since prevention is the key to animal health, and proper nutrition is the cornerstone of that process, we will discuss many aspects of proper guidelines and methods to feeding animals in different life stages and disease states with a bent towards natural diet and herbal supplements. We'll also cover common diseases found in shelter animals, including their symptoms and treatment.

Course Outcomes:

- List the six classes of nutrients with a basic understanding of their functions within the body and the food sources they come from.
- Understand the basic nutritional requirements based on anatomy, evolution, and natural limitations.
- Understand how to read a pet food label and make feeding decisions based on ingredients, concentrations, and claims.
- Calculate daily energy requirements based on activity level.
- Distinguish between the nutritional needs for growth and production, adult maintenance, changes in body condition score, geriatrics.
- Understand the use of diet and herbal supplements as part of disease management.

- Know how to take vital statistics, recognize emergency situations, and provide basic CPR and first aid.
- Identify and treat common diseases of the cat and dog.

ABI 317 - Equine Health & Nutrition

Equine Health and Nutrition will review major principles of general care, nutrition and their direct application to the anatomy of the horse, as well as proper emergency care to help secure the health of the animal when the unforeseen happens. However, since prevention is the key to animal health, and proper nutrition is the cornerstone of that process, we will discuss many of the proper guidelines and methods to feeding horses in different life stages, and disease states, with an emphasis on a natural diet and herbal supplements.

Course Outcomes:

- Understand basic equine care and preventative health care practices.
- Know the six classes of nutrients with a basic understanding of their functions within the body and the food sources they come from.
- Explain the basic nutritional requirements for the horse based on its anatomy, evolution, and limitations.
- Calculate daily energy requirements for a horse based on activity level.
- Distinguish between the nutritional needs of a horse for growth and reproduction, adult maintenance, changes in body condition score, and geriatric concerns.
- Understand the use of diet and herbal supplements as part of disease management.

- Know how to take vital statistics, recognize emergency situations, and provided basic first aid and emergency care appropriate for a horse.

ABI 331 - Animal Behavior: An Evolutionary Approach

This rigorous, science-based course builds an evolutionary framework for understanding why animals exhibit particular patterns of behavior. Animal behavior is investigated through both the ecological processes that have driven the evolution of behavior and the physiological mechanisms that allow behaviors to be performed. Topics covered include genetics and behavior, learning, organization of behavior, communication, mating systems, parenting behavior and cooperation. The principle objective of this course is to understand how natural selection has shaped animal behavior.

Course Outcomes:

- Describe how evolution shapes animal behavior.
- Understand the relationship between genetics and behavior.
- Contrast different animal foraging and anti-predatory strategies.
- Recognize different modes of animal communication.
- Define and describe animal reproductive and parental behaviors.
- Understand how social behavior and cooperation can evolve.

ABI 334 - Advanced Canine Training*

This course builds upon the fundamental skills learned in ABI 234 Canine Training. Students will go far beyond simply designing a training

plan by learning how to incorporate principles of behavioral science to identify training goals, and to develop and evaluate assessment and treatment programs for dogs. We will tackle difficult canine behavioral problems, with an emphasis on case studies, learn how to manage dog-dog play interactions, and be introduced to a variety of specialized training and canine competition options. Students are encouraged to share their personal training challenges with the class, drawing upon the classes' collective problem solving abilities. The course will also incorporate material on working with clients to maintain effective behavior change in their dogs, producing long-lasting results.

Please note that ABI 234 Canine Training is a prerequisite for this course.

Course Outcomes:

- Choose ethical training tools and minimize the use of corrections.
- Know the etiology of common problem behaviors.
- Develop individualized, science and evidence-based assessment and treatment plans.
- Conduct objective measurements of behaviors and behavioral change.
- Incorporate cognitive challenges, enrichment and choice into your training plans.
- Read and critically discuss case studies of problem behaviors.
- Explain important considerations for specialized training and competition with dogs.
- Work with a diverse group of clients to develop their compliance with training and maintain effective

behavior change in their dogs.

ABI 335 - Advanced Feline Training

The Advanced Feline Training course will build upon the skills developed in ABI 235 Feline Training. Instructor-led discussions will break down real case studies drawn from decades of personal experience; students are encouraged to bring their own cases as well, drawing upon the classes' collective problem solving abilities. Students will learn to manage a case from the initial owner interview and diagnosis to the final stages of long term management and resolution.

Please note that ABI 235 Feline Training is a prerequisite for this course.

Course Outcomes:

- Make diagnostic impressions for simple and complex behavioral conditions.
- Create detailed treatment plans.
- Determine if the cat is confident or lacks confidence; determine whether fear is a component of the behavior.
- Determine which behaviors co-occur and what their relation is to one another.
- Identify the triggers for each behavior.
- Design treatment plans according to client family structure.
- Prioritize or combine treatments when multiple problems are diagnosed.
- Determine how to improve progress if the behavior is slow to change.

COURSE DESCRIPTIONS & OBJECTIVES



Service Dog Training is designed for professional dog trainers that would like to train dogs for various forms of assistance, with an emphasis on service training.



In the class, Behavior of Rabbits & Rodents we will review their species-specific behaviors in depth and explore how this knowledge can be used to improve their welfare in captivity.

ABI 338 - Service Dog Training*

Service Dog Training is designed for professional dog trainers that would like to train dogs for various forms of assistance, with an emphasis on service training. Students will learn how to train dogs for specific tasks, in addition to understanding the basics of working with dogs and the disabled.

Course Outcomes:

- Distinguish between the different types of assistance dogs and compare and contrast the legal status of each.
- Select and assess dogs for use in service training.
- Socialize dogs to prevent or eliminate fears, phobias, and excessive reactivity.
- Train dogs for basic obedience, public access and a wide variety of specific service dog tasks.
- Identify four or more professional organizations dedicated to service dog training, along with their relative functions.
- Explain the insurance requirements for service dogs and how it can be obtained.
- Adapt training plans to facilitate training by individuals with disabilities.
- Working effectively with disabled individuals to facilitate training.

ABI 375 - Behavior of Rabbits & Rodents

Rabbits and rodents are the most widely used models of disease; they occupy a prominent place in the world of research. Despite their prominence, however, animal care-

givers are often unfamiliar with the range of behaviors and behavioral needs in captivity. We will review their species-specific behaviors in depth and explore how this knowledge can be used to improve their welfare in captivity.

Course Outcomes:

- Describe the relationship between the sensory systems of rodents and rabbits to social/reproductive behavior.
- Apply your knowledge of rodent/rabbit behavior to design an enrichment and social housing program.
- Perform an analysis of reproductive issues based on breeding behavior.
- Discuss the various anatomical differences between different rodent and rabbit species.
- Describe aspects of abnormal behavior and behavioral testing principles

ABI 378 - Primate Behavior & Enrichment

Primates are well known for their complex behaviors, social systems and communication. Proper care and management demand that we understand these behaviors and implement the most effective enrichment strategies possible. We will take a systematic look at the behavioral needs of primate species in captivity and how enrichment can be used to maximize their psychological well-being.

Course Outcomes:

- Understand the process of normal development and predict how de-

viations will affect adult behavior.

- Distinguish between normal and abnormal behavior; recognize the most common forms of stereotypical or self-injurious behavior.
 - Create an enrichment plan to reduce undesirable behavior or to increase the range of species-typical behaviors.
 - Treat or prevent the development of primate fears and phobias.
 - Design and implement an effective training plan to facilitate husbandry, enrichment or research.
 - Create and implement an assessment plan to determine the effectiveness of enrichment and behavioral management efforts.
- Describe the principles of effective leadership and how to implement them across an organization.
 - Diagnose common behavioral problems and create a plan for reducing or eliminating them.
 - Build a network for fostering donations, including the effective use of social media.
 - Create or expand a Trap-Neuter-Return policy for feral cats.
 - Describe the legal and financial requirements that must be met to open a new shelter.
 - Manage your adoption program to maximize placement while minimize returns.

ABI 384 Animal Shelter Management

Animal Shelter Management takes an in-depth look at the skills and knowledge you'll need to succeed in this field. You'll study the best practices that have been established by veterinarians, behaviorists and other animal care staff. The course covers all aspects of facility management, including, behavior, disease control, adoption programs, community outreach, effective leadership and much more. We'll also discuss the process for starting your own shelter, rescue, or other humane organization.

Course Outcomes:

- Establish effective protocols for managing animals and the overall facility.
- Reduce the risk of infectious disease through proper sanitation and husbandry.

* Must have access to a dog.



Animal Shelter Management takes an in-depth look at the skills and knowledge you'll need to succeed as a shelter manager or director.

A woman with long blonde hair, seen from behind, is sitting on the edge of a boat. She is wearing a dark long-sleeved shirt and dark shorts. Her right arm is raised high in the air. To her left, a red and white cooler sits on the boat's edge. In the background, a dolphin is captured mid-jump, its body arched in the air above a splash of water. The scene is set on a body of water with a building and a fence visible in the distance under a clear sky. The lighting is bright, creating a shimmering effect on the water's surface.

FACULTY
& STAFF

FACULTY AND STAFF



Deanne Angell,
Assistant Professor

Education:

M.B.A., Harvard Business School;
B.S. in Education, Northwestern University; Associates Degree in Applied Sciences, Bristol Community College

Professor Angell has been a horsewoman since age 12, owning her own horses and involved in several disciplines including long distance trail riding, carriage driving, and dressage. She operated a small boarding facility for about 6 years. She also volunteered for many competitive equine events. In addition, she has taught many business marketing courses at University of Massachusetts, Western New England College, Middlesex Community College and Regis College. Her longtime goal has been to combine her love of animals with her business skills to teach and mentor students.



Sherry Baker,
Faculty Emeritus

Education:

Master of Family Therapy,
Hahnemann University;
B.A., University of Mississippi



Cherie Beattie,
Assistant Professor

Education:

M.S., University of Louisville;
B.S., University of Louisville

Professor Beattie received her certification from the Certification Council for Professional Dog Trainers while working as the Behavior Manager at the Kentucky Humane Society. There she established a new dog training program to make shelter dogs more adoptable. She currently runs her own dog training business, teaches online at the University of Louisville, and serves as a committee member of the Association of Pet Dog Trainers. She regularly contributes articles on dog behavior to several professional newsletters and magazines.



Elisa Bobrin,
Associate Professor

Education:

D.V.M., University of Florida;
B.S., American University

Dr. Bobrin is a veterinarian specializing in aquatic animal medicine and herpetology. She oversees the development of the curriculum and teaches several courses in Zoo and Aquarium Science, including Animal Health, Nutrition and Disease.



Gary Fortier, Ph.D.,
President,

Education:

Ph.D., Boston University,
B.A., Cornell University

Dr. Fortier has extensive experience as both a researcher and an educator. He has over 20 years of experience as a university professor, teaching wildlife management, animal behavior, animal training, and behavioral enrichment. He has long championed active learning strategies and promoted the development of online courses. He chaired an animal science department at a distinguished private university for many years; he continues to hold a tenured faculty position. He has also served as Director of Behavioral Enrichment at the Elmwood Park Zoo and is active in research on the behavioral enrichment of wildlife, companion animals and laboratory animals.

FACULTY AND STAFF



Andrea Bogle,
Assistant Professor
Education:

M.S., University of Aberdeen;
B.S., University of Maine

Professor Bogle started her animal training career in 2002. Since then she has worked with a variety of domestic and exotic species at zoos and aquaria around the world. Her experience includes training animals for TV and movie productions, research training with wolves and dogs, training dolphins for animal assisted therapy, and working with pet owners to help them overcome problem behaviors. She is currently a senior trainer at the Texas State Aquarium and a part-time canine trainer.



Summer Brooks,
Assistant Professor
Education:

M.S., San Diego State University;
B.A., San Diego State University

Professor Brooks is a professional behavioral consultant living in the San Diego area. Her broad background has included work with dolphins, sea lions, orcas, primates and companion animals. She currently works as a full time behaviorist and is a lecturer at San Diego Mesa College.



Sara Brisson,
Associate Professor
Education:

Psy.D., Doctorate in Clinical Psychology, University of Hartford;
M.A., Clinical Psychology, University of Hartford;
B.A., Psychology, College of the Holy Cross;
Certification in Animal-Assisted Interventions in Counseling, Idaho State University

Professor Brisson currently works in Adult Outpatient Behavioral Health. She has had extensive work, volunteer, academic, and research experience pertaining to animal-assisted therapy and animal-assisted activities.

Professor Brisson has worked with therapy dog organizations for over 8 years. In addition to her work in animal assisted interventions (AAI), she has conducted research on the impact of therapy and service dogs on individuals. She has used AAI to help elementary students learn to read, to assist service members diagnosed with medical and psychiatric conditions, and to provide companionship to older adults in nursing homes. Her breadth of training and experience make her an invaluable addition to our faculty.



Kelsey Bruno,
Associate Professor
Education:

Ph.D., Animal Science, Oklahoma State University;
M.S., Animal Science, University of Kentucky
B.S., Conservation & Wildlife Management, Delaware Valley University

Dr. Bruno is a university professor with 10 years of experience in nutrition and wildlife rehabilitation. Her research work has included the coordination of multi-year, multi-institution studies examining the relationship between animal health and nutrition. She has worked as the clinical supervisor of a large wildlife rehabilitation center and has completed research with white-tailed deer and multiple species of vultures.



**Gina Caldwell,
Associate Professor**

Education:

Ph.D. in General Teaching Psychology, Walden University; M.A. in Psychology, Specialization in Animal Behavior & Conservation, Hunter College; M.A. of Philosophy in Psychology, Walden University; B.S. in Psychology & Marine Science Specialization, Slippery Rock University

Dr. Caldwell is an adjunct professor at several universities, teaching courses in animal behavior and psychology. She has dedicated her career to animal training, behavior, and welfare. Dr. Caldwell has over twenty-five years of experience in the behavioral science and zoological fields, working with a variety of species; her graduate research focused on the effects of environmental enrichment on sea otter behavior. She has participated in several marine conservation and research projects with a diverse group of animals, including bottlenose dolphins, sea otters, penguins, and right whales.

Dr. Caldwell has over 20 years of experience as a professional dog trainer, teaching classes in obedience, socialization, and therapy dog training. She was a therapy dog evaluator and has been a registered therapy dog handler since 2014. She conducted her doctoral dissertation on the factors that motivate canine handlers

to volunteer in animal-assisted activities. She is a fear-free and relationship-centered certified trainer. Her training philosophy focuses on using LIMA methods to help students to connect, communicate, and ultimately develop a strong relationship with their dogs.



**Jennifer Campbell,
Associate Professor**

Education:

Ph.D., North Carolina State University; M.S., North Carolina State University; B.S., Virginia Commonwealth University

Dr. Campbell has worked in zoo settings with elephants, big cats, hoof stock, and birds. She has done field work with caribou and moose in Alaska, red wolves in North Carolina, and the North Atlantic right whale in Maine before settling in Durham, NC to work at the Duke University Lemur Center. Dr. Campbell completed her doctorate in primate nutrition and now teaches at ABI and North Carolina State University.

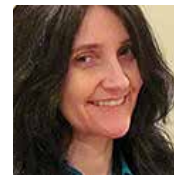


**Jennifer Celli,
Assistant Professor**

Education:

M.S. in Child Psychotherapy & Play

Therapy, Monmouth University; B.A. in Psychology, Stockton University Professor Celli is a Licensed Professional Counselor and Registered Play Therapist. She specializes in Dialectical Behavior Therapy (DBT) providing evidence-based treatment for suicidal/self-injurious children, adolescents, young adults and their families. Professor Celli incorporates Animal Assisted Play Therapy extensively into her practice; she is also certified as a Mental Health Professional through EAGALA (Equine Assisted Growth and Learning Association).



**Valerie Chalcraft,
Associate Professor**

Education:

Ph.D. and M.A., University of Nevada, Reno; B.A., University of California, Berkeley

Dr. Chalcraft has consulted on companion animal behavior problems in shelters and clients' homes for over a decade. She has worked extensively with American Society for the Prevention of Cruelty to Animals (ASPCA) and has served as the Director of the Behavior Helpline. Dr. Chalcraft has studied the impact of enriched environments on the behavioral and linguistic development of captive chimpanzees. She has created enrichment protocols for chimpanzees, gorillas, monkeys, and a variety of small mammals.

FACULTY AND STAFF



**Nicole Dorey,
Associate Professor
Education:**

Ph.D., University of Exeter;
M.S., University of North Texas;
B.S., University of Florida

Dr. Dorey has been working in zoos and behavior for over 10 years. While completing her doctoral work in England, she worked with the Whitley Wildlife Conservation Trust (Paignton Zoo, Living Coasts and Newquay Zoo). Currently, Dr. Dorey is working with Dr. Clive Wynne in the Canine Cognition Lab and is conducting research with domestic dogs and with wolves at the Wolf Park in Battleground, Indiana. She teaches at ABI and the University of Florida.



**Tracey DePaul,
Assistant Professor
Education:**

B.A., Arcadia University

Professor DePaul is the Animal Assisted Therapy and Nature Education Program Supervisor at Wordsworth RTF, a non-profit residential treatment program for children ages 10-21 who require Residential Placement because of serious emotional disturbances or because they are exhibiting aggressive, pre-delinquent behavior. Tracey coordinates with a Treatment team to provide Individual and Group AAT/AAE for these children. She received her AAT certification studying under Aaron Katcher Ph.D., a pioneer in the field of Animal Assisted Therapy.

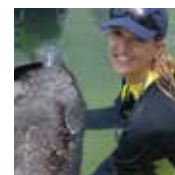


**Elizabeth Duke,
Associate Professor
Education:**

Psy.D. & M.A. Clinical Psychology,
The Chicago School of Professional Psychology;
B.A., University of Findlay

Dr. Duke has focused her career on partnering with horses to promote growth, development and balance. She is a Certified Therapeutic Instructor with the Professional Association

of Therapeutic Horsemanship; is an equine specialist in Mental Health and Learning; and is certified in Trauma Focused Cognitive Behavioral Therapy. She has taught international clinics in horsemanship, including programs in Germany, England, Canada and the Netherlands. She has taught horseback riding for over ten years.



**Kat Echevarria,
Associate Professor
Education:**

Ph.D. Student, Antioch University New England;
M.S., Nova Southeastern University; B.S., University of Oregon

Professor Echevarria has been a professional animal keeper and trainer for over twenty years. She has had the opportunity to work with a wide variety of animals, including domestic dogs and cats, small exotic animals, dolphins, capuchin monkeys and great apes. She is currently the Assistant Operations Manager at Birds & Animals Unlimited, where she has spent many years hosting the live "Animal Actors on Location" show at Universal Studios Hollywood and Orlando, in addition to training animals for movies and television.



**Janis Hammer,
Professor**

Education:

V.M.D., University of Pennsylvania;
B.S., University of Delaware

Dr. Hammer has long been a staunch advocate of animal assisted therapy, serving as Director of Animal Assisted Therapy & Activities at Delaware Valley College and as a trainer and evaluator for the Delta Society. Prior to entering academia, Dr. Hammer worked in the biomedical field and in laboratory animal science. In addition to teaching, she currently practices small animal medicine at her clinic in Oregon.



**Christine Houghton,
Assistant Professor**

Education:

M.S., North Carolina A & T State
University;
B.S., Framingham State College

Professor Houghton brings a wealth of experience to our programs. She is currently an Associate Professor at Bristol Community College, where she created a new program in Animal Care. As the director, she oversees all academic and experiential components.

Professor Houghton previously spent

seven years as the department head and an instructor in the Animal Care & Management program at Alamance Community College, where she specialized in husbandry and nutrition; she also been an active researcher in the fields of enrichment and nutrition. Professor Houghton has worked in several public and private zoos and has served on the board of directors at an exotic animal preserve.

Professor Houghton has worked with shelters in multiple capacities through her programs in North Carolina and Massachusetts. She has taught shelter staff general husbandry, temperament testing, enrichment, basic obedience testing, handling & restraint, shelter zoonotic protocols, diagnostics, and treatment in addition to wellness prophylactic vaccinations and quarantine room care.

She has presented her academic research to colleagues at the U.S. Department of Agriculture, the American Society of Animal Science, and the Comparative Nutrition Society.



**Kristen Lewis,
Assistant Professor**

Education:

B.S., University of Delaware

Professor Lewis is the Chief of Staff at the Philadelphia Zoo and works closely with the Zoo's leadership team and Board of Directors to drive strategic planning, implement organizational priorities, and measure



mission impact. Kristen has worked in the Zoo field for over 25 years. She spent several years leading the education department, including outreach, school and family programs, public programs and exhibits that reach 1.2 million visitors a year.

She has been riding horses for over 30 years and currently operates her own horse farm. At a young age, she began competing in equine events (dressage, cross country and show-jumping) along the east coast. She rode on the Equestrian Team at the University of Delaware and has managed multiple barns with show and pleasure horses for over two decades. She currently has two horses, a thoroughbred named Snapshot, who she has had for over 15 years, and a thoroughbred/draft cross named Silk.

FACULTY AND STAFF



**Toni O'Neil,
Assistant Professor**

Education:

B.S. in Zoology, University of Maryland, College Park

Professor O'Neil has been a rehabilitator and wildlife rehabilitation instructor for over 20 years; her specialty is the rehabilitation of songbirds and shore birds. An active defender of wildlife, she has been instrumental in stopping the injuring of Brown Pelicans by commercial fishing trawlers. Currently she is the Director of Possumwood Acres Wildlife Sanctuary in Hubert, NC, where they provide wildlife education programs for local residents and school children using their non-releasable raptors. She also teaches several courses at the Coastal Carolina Community College in Jacksonville, NC, including classes in biology, zoology, veterinary care and wildlife rehabilitation.



**Lindsay Mehrkam,
Associate Professor**

Education:

Ph.D., University of Florida; M.S., University of Florida; B.S., Franklin & Marshall College

Professor Mehrkam has worked with a wide range of species in numerous animal facilities including Disney's Animal Kingdom, Busch Gardens, Mote Marine Laboratory, Wolf Park, the Santa Fe College Teaching Zoo, as well as a number of wildlife sanctuaries and animal shelters. Her primary research interests focus on the benefits of human-animal interaction, enrichment, and training for improving the welfare of captive animals, and especially canines. As a Board-Certified Behavior Analyst, she also provides in-home consultations with both animals and people, and studies applications of the human-animal bond for improving the lives of children with intellectual, developmental, and emotional disabilities. Dr. Mehrkam is currently an Assistant Professor of Psychology at Monmouth University.



**Erik Moreau,
Assistant Professor**

Education:

B.S., Animal Health Technology Vanier College, RLAT., CALAS

Professor Moreau currently is the Coordinator of the Animal Behavior and Enrichment Program at Charles River. He is a member of the Canadian Association for Laboratory Animal Science and sits on the Board of Directors as the Education Council Chair.



**Karen Plescia,
Assistant Professor**

Education:

BS, Biology, Syracuse University
MS, Higher Education, Syracuse University

Karen is a behavioral consultant operating her own business, By Your Side Pet Behavior Consulting & Training, LLC. In addition to working with private clients, she provides staff training for shelters, veterinary clinics and dog day care facilities.

Her dedication to life-long learning is evident from the multitude of credentials, certificates and diplomas she has acquired over the last decade, including Fear Free certification. Karen also serves as a

Professional Behavioral Responder for the ASPC Anti-Cruelty Behavior Team, is a board member of one of the largest feline TNR (trap-neuter-return) programs in New England, and is a foster caregiver for medically and behaviorally compromised animals. Karen brings to class the first-hand knowledge that comes with over 14 years of experience working with cats and other companion animals.



**Barbara Toddes,
Assistant Professor**

Education:

M.S., Nutrition and Human Performance, Logan University;
Graduate Certificate, Bioinformatics, Penn State University
B.S., Animal Production, Penn State University

Professor Toddes is the Nutrition Program Director at one of America's oldest zoos; she is responsible for all aspects of nutritional management, including diet formulation, nutritional research, keeper training and staff supervision. She manages a centralized commissary that services a collection of 1,400 animals in 17 different exhibit locations.

In addition to her myriad responsibilities at the zoo, Professor Toddes is a popular lecturer at universities and conferences around the world. She actively shares her knowledge and experience with colleagues, presenting at numerous sympo-

siums and workshops, and provides an ongoing lecture series for keepers and animal care staff. Professor Toddes is an active researcher, authoring over two dozen professional publications on zoo animal nutrition.



**Chris Waldron,
Assistant Professor**

Education:

B.S., Pennsylvania State University

Professor Waldron worked at the Philadelphia Zoo for over 18 years, where he started as a zoo keeper and then moved on to a variety of other positions, including the Curator of Primates, Curator of Carnivores, and Sustainable Operations Manager. His work in the design of Philadelphia's large cat exhibit won the prestigious Association of Zoos & Aquariums' Exhibit of the Year award. Professor Waldron recently took on a new challenge as the Director of Sustainability for Camden County, NJ, which has over 50,000 residents and covers 222 square miles.



FACULTY AND STAFF



Katrina Winsor,
Assistant Professor

Education:

M.S. in Anthrozoology, Canisius College;

M.S. in Applied Behavior Analysis and Autism, The Sage Colleges;

B.S. in Psychology/Biology, Long Island University
Southampton College

Certificate in Dog Emotion and Cognition, Duke University;

Certificate in Animal Assisted Therapy, University of New Hampshire

Professor Winsor is an Animal-Assisted Intervention Specialist, as well as a Research Coordinator and Data Specialist, designing, implementing and evaluating programs in AAI. Her animal-assisted intervention programs are designed to augment the existing therapies received by students (occupational, physical, and speech therapy).

Her devotion to the well-being of both people and animals is apparent from her lifelong learning, including certificates in Dog Emotion & Cognition from Duke University and in Animal Assisted Therapy from the University of New Hampshire, as well as her prior professional experience at the North Shore Animal League and Canine Companions for Independence. Professor Winsor remains active in research, attending conferences, serving on

committees, and publishing her work.

In addition to her work in animal assisted interventions, Professor Winsor has also worked as a marine biologist, marine mammal trainer, and wildlife rehabilitator.

Administration

René Brooks,
Assistant Director
brooks@animaledu.com

Judy Harchar,
Registrar/Bursar
harcharj@animaledu.com

Jennifer Saylor
Admissions Counselor
saylorj@animaledu.com

Advisory Board

Genevieve Andrews-Kelly,
Veterinary Associate
Merck & Co., Inc.

Gaurang Bhatt,
Director, Global Market Access
Otsuka America Pharmaceutical

Nancy Thorne Cahill,
Executive Director
The Canine Connection

Ed Chroscinski, VMD,
Assistant Professor of
Animal Science
Delaware Valley University

Janis Hammer, VMD,
Veterinarian
Private Practice

Reginald Hoyt, MS,
President, CEO
Forest Partners International

Karen Lasker,
Director
The Brody Project for Animal Assisted Therapy

LaVonne Meunier, DVM,
Director Veterinary Medicine
GlaxoSmithKline Pharmaceuticals

Erik Moreau,
Charles River Laboratories Preclinical Services Montreal Technical Specialist: Animal Behavior

Charles Pennachio, Ph.D.,
Professor
University of the Arts

Anne Reynolds,
Program Director
Special Equestrians, Inc.

David Shepherdson, Ph.D.,
Deputy Conservation
Division Manager
Oregon Zoo



TERMS & CONDITIONS

Terms and Conditions:

We hope you'll enjoy the services provided by the Animal Behavior Institute (ABI). Please be aware that by using our service you're agreeing to be bound by these terms and conditions. If you don't wish to be bound by what you read below, you shouldn't register with ABI. Thus, please review the terms periodically. By registering, you certify that all information you provide in the registration is accurate. ABI users may only maintain one active registration per person. You can register for more than one class at a time but you can only have one identity.

Our Content Is Copyrighted:

The content on this site and in our courses is protected by U.S. and international copyright laws and is the property of ABI and/or the providers of the content under license. By "content" we mean any information, mode of expression, or other materials and services found on ABI. This includes message boards, chats, software, our writings, graphics, and any and all other features found on the site or in our courses. No part of it may in any form or by any means (electronic, mechanical, photocopying, recording or any other) be reproduced, stored in a retrieval system or be broadcast or transmitted without the prior, written permission of ABI.

Please note that when you post content somewhere on our site, such as a chat room or discussion board, you agree that ABI has an unlimited license to republish

anything you post in our areas, but, aside from that, you retain the right to use your words however you want. If you don't want us to republish your words, don't post them on our site.

Disclaimer of Warranties & Liabilities:

ABI provides a broad range of information and services. All efforts have been made to ensure that material accessible is accurate and up-to-date. However, ABI makes no warranty, guarantee, or promise, express or implied, that the material made accessible is either accurate, complete, up-to-date, or fit for any use whatsoever, nor does ABI represent or imply that its use will not infringe privately held rights. We offer no promises or warranties except that we will not knowingly publish false or misleading information. ABI also makes no promises that our content or the service itself will be delivered to you uninterrupted, timely, secure, or error-free. ABI accepts no liability or responsibility for any loss or damage suffered as a result of direct or indirect use or application of any material or information made accessible via its material. Material accessible via ABI may contain hypertext links to material held on networked information servers beyond our server. We are not responsible for the contents of any off-site material referenced from our hypertext documents.

You agree that under no circumstances will ABI be liable for direct, indirect, incidental, or any other

type of damages resulting from your use, or downloading of any content on our site or in our courses. This includes, but is in no way limited to, loss or injury caused in whole or in part by our negligence or circumstances beyond our control in creating or delivering any portion of ABI. If any provision in this agreement is invalid, unenforceable, or nonsensical, the remaining provisions will continue in full force and effect.

Reserved Rights

ABI reserves the right to alter or remove any material or information from its site without notice. We reserve the right to monitor all use of our computer systems and communication networks through authorized staff.

If you have any questions about our policies, please contact us at (866) 755-0448 or via email at support@animaledu.com. If don't agree with our policies or use of cookies, please do not use our website.





PRIVACY POLICY

The Animal Behavior Institute (ABI) is committed to protecting and respecting your privacy. This Privacy Statement sets out our privacy policy and explains what we do with the personal information that we collect from you.

If you sign up for our courses, we will create an account for you with our classroom management partner to provide you with access to course materials. If you pay for tuition or other products or services online, we will send your credit card number and other personal identifying information only to a third-party financial institution to verify the credit card numbers and process transactions.

Log Files

We use log files, as do most standard web servers. This information includes internet protocol (IP addresses, browser type, internet service provider (ISP), referring/exit pages, platform type, date/time stamp, and number of clicks.

We collect this information to analyze trends, administer the site, track user's movement in the aggregate, and gather broad demographic information for aggregate use. This aggregate data is not linked to personally identifiable information.

For some course materials, students may be directed to other vendors, such as Amazon.com, that have their own privacy and data collection practices. We do not collect, see, or have access to any personal information you may provide to Amazon or other companies when purchasing these materials.

Cookie Policy

1. What is a cookie?
2. How we use cookies
3. Your consent to the use of cookies
4. Blocking cookies
5. Types of cookies
 - Necessary cookies
 - Functional cookies
 - Analytical cookies
 - Marketing cookies

1. What is a cookie?

Cookies are text files containing small amounts of information which are downloaded to your device when you visit a website. Cookies are then sent back to the originating website on each subsequent visit, or to another website that recognizes that cookie.

These cookies contain no personally identifiable information but they will use your computer's IP address to know from where in the world you are accessing the Internet. They can make the web more convenient by storing information about your preferences on a site. Although we may assign your browser a cookie, it doesn't tell us who you are. Only you can do that.

We may use cookies to store visitors' preferences, record session information (such as courses or programs chosen), record user-specific information on what pages users access or visit, alert visitors to new areas that we think might be of interest to them when they return to our site, and to record past activity in order to customize

our site's content based on visitors' browser type or other information that the visitor may provide us. The information ABI collects is used to improve the content of our website, customize the content for individual visitors, notify visitors about our website updates and provide information about products and services.

Most of our cookies expire within 30 days, although some of our analytical cookies may persist longer. If you choose to block our use of cookies, some aspects of the site may not work properly and you may not be able to use all of the features available.

2. Use of cookies

Browsing data is used to optimize your browsing experience. It is also used to evaluate our performance and how visitors navigate through the site. Cookies allow us to:

- Personalize your experience and preferences
- Authenticate you as a user
- Improve the performance of the site
- Collect aggregate information on users of the site

3. Your consent to the use of cookies

By continuing to use our site, you are deemed to consent to our use of the cookies described in this policy. If you do not consent to the use of cookies, you may block them.

PRIVACY POLICY

4. Blocking cookies

You can block cookies through settings in your browser. Because these settings are different in different browsers, we recommend that you visit All About Cookies at www.allaboutcookies.org, where you can find comprehensive information on cookie management and blocking for a wide variety of browsers.

5. Types of cookies

Necessary

These cookies are necessary for the website to function; therefore, we cannot switch them off in our systems. They are usually only set in response to actions made by you, which amount to a request for services, such as setting your privacy preferences, logging in, or filling in forms.

Functional

Functional cookies enhance your experience on our website by allowing us to remember some of the choices you make (such as username, language, or region), thus enabling us to provide better functionality, personalization, security, and improved user experience.

Analytical

Analytical cookies collecting information about how visitors use our website. This information, together with our web server log files, allow us to generate a better user experience and improved performance of the site.

Marketing

These cookies to record your visit to our Site, the pages you have

visited, and the links you have followed.

6. Third party cookies

Cookies on the ABI websites may be set by us or by third-party services. ABI is not responsible for third-party cookies. These organizations maintain their own privacy policies. For example, ABI uses Google Analytics cookies to analyze web use and Facebook cookies to present ad content when you visit Facebook. This is not a comprehensive list of all third-party services that ABI is currently using or will use in the future.

Google Analytics Cookie Policy:

<https://policies.google.com/technologies/cookies?hl=en-US>

Facebook Cookie Policy:

<https://policies.google.com/technologies/cookies?hl=en-US>

Contact Information

If you supply us with your contact information, such as your e-mail address, mailing address or telephone, you may receive periodic notices from us with information on new products and services, newsletters, or upcoming events.

If you do not want to receive messages or newsletters from us in the future, please let us know by contacting us at support@animaledu.com. ABI will never rent, sell, or share your personal information with other parties.

Ad Servers

We do not partner or work with any ad server companies. We do

not run external advertising on any of our public or student sites.

Survey Information

We may on occasion seek information on our students or visitors via electronic or print surveys. Participation is optional. Survey contact information (name, e-mail, address, telephone) is used to request more information in relation to the survey when necessary. We may also use contact information to send out targeted material on ABI. Survey participants may opt-out of future contact at any time. Surveys may also capture demographic information (zip code, age, sex, etc.). This information may be used to personalize the online experience of ABI visitors.

Credit Card Processing and Security

A secure server encrypts all payment information that you transmit to us while using our site. We use the latest technology to keep your personal information safe, including your user name, password, and credit card number and expiration date. The encryption process takes personal information and converts it into code that is securely transmitted over the Internet.

If you experience fraudulent use of your credit card as a result of using your credit card to make a purchase through ABI, you must notify your credit card provider in accordance with their reporting rules and procedures. Credit card transactions are handled by a third-party financial institution that re-

ceives the credit card number and other personal identifying information only to verify the credit card numbers and process transactions.

Please remember that whenever you disclose personal information publicly -- for example, on discussion boards, through email, or in chat areas -- that information can be collected and used by others. In short, if you post personal information online that is accessible to the public, people will know that information and you may receive unsolicited messages from other parties in return. If you don't want others to have your email address, don't post your email address on a discussion board. Please be aware that when you post messages on discussion boards, people can respond to your posts. While we do our best to protect your personal information, ABI cannot ensure or warrant the security of any information you transmit to us, and you do so at your own risk. As in all transactions, you must protect yourself. You are responsible for maintaining the secrecy of your passwords and any account information. Please be careful and responsible when you're online.



Office of Admissions

Animal Behavior Institute, Inc.
4711 Hope Valley Road
Suite 4F-332
Durham, NC 27707

Toll Free:

(866) 755-0448

Fax:

(866) 351-6911

Email:

support@animaledu.com

www.animaledu.com



A more personal education